

64 Rowley Road, Guildford, NSW 2161

House For Sale

Wednesday, 10 April 2024

MONTANO
EST. 1960

64 Rowley Road, Guildford, NSW 2161

Bedrooms: 3

Bathrooms: 2

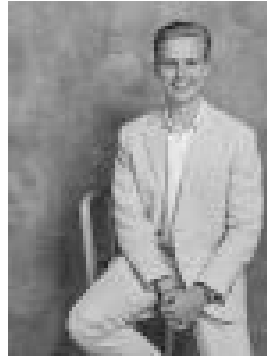
Parkings: 2

Area: 760 m2

Type: House



Michael Montano



Jack Mullane
0468821004

Auction

This single-level 3-bedroom home, sitting on a 760sqm corner block with a generous frontage ticks all the boxes. For those looking to occupy, the property is well presented boasting a spacious floorplan, an abundance of natural light, and a fully fenced private backyard. It is also an ideal opportunity for those looking to build or renovate to create an ideal family home, add-value, or go further as a potential duplex development. (STCA) Located in an ideal location, the property sits opposite Woodville Golf Course, and is only moments from schools, shops, transport options, cafes, and restaurants. The property further features:

- 3 oversized bedrooms, bathroom with tub
- Functional kitchen with great cupboard space
- Detached separate dwelling with dedicated laundry and bathroom
- Oversized dual lock-up garage and storage area connected to separate dwelling
- Very large backyard accessed via Rawson Rd
- Perfect central location, minutes to shops, cafes, schools, and transport options.