

**64 Thames Boulevard, Werribee, Vic 3030**



**Sold House**

Tuesday, 26 September 2023

64 Thames Boulevard, Werribee, Vic 3030

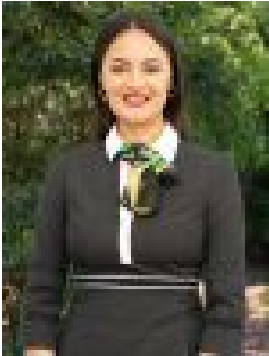
**Bedrooms: 3**

**Bathrooms: 2**

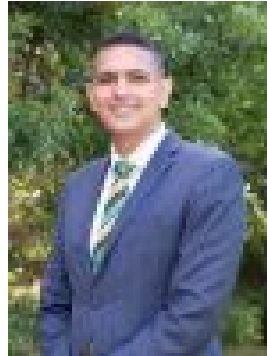
**Parkings: 2**

**Area: 529 m2**

**Type: House**



Terrina Seiuli  
0414095024



Vik Monga  
0397411511

## Contact agent

Discover the charm of Central Werribee with this delightful home! Enjoy convenient access to all amenities and attractions just minutes away! 64 Thames Boulevard is a charming 3-bedroom, 2-bathroom all original home located in the heart of central Werribee, a bustling suburb of Melbourne, Australia. The property boasts a prime location opposite Westgrove Primary School and just minutes away from all of the amenities and attractions that Werribee has to offer, including Werribee Plaza. As you enter the home, you will be greeted by the inviting living room, complete with large windows that flood the space with natural light. This flows seamlessly into the adjoining dining area, making it ideal for entertaining guests. The bedrooms are located through the hallway, providing plenty of privacy and tranquility. The extra large windows almost the same size as the bedroom wall floods the home with natural sunlight. They sure don't make them like this anymore! Outside, the home features a beautiful large backyard with plenty of space for outdoor entertaining. The backyard is fully fenced providing plenty of privacy and security. The double garage, double side opening gives access to drive through providing convenient and secure parking for your vehicles. Located just minutes away from Werribee's vibrant shopping and dining precinct Werribee Plaza, as well as its many parks, schools, and public transportation options, 64 Thames Boulevard offers the perfect blend of comfort, convenience, and style. Whether you are a first-time buyer, a growing family, or a savvy investor, this stunning property is sure to impress. CALL TERRINA 0414 095 024 OR VIK 0420 451 995 TODAY!! - 6 Minutes to Werribee Plaza - 5 Minutes to Werribee Train station - 1 Minute walk to West Grove Primary School - 2 Minute drive to Bethany Catholic Primary - 3 Minutes to Riverbend Historical Park - 8 Minutes to Watton Street - 3 Bedrooms - 2 Bathrooms - New Carpet - Extra Large windows in bedroom - Side access/Double garage -Opposite Woodgrove Primary School