

# 65/20 Federal Highway, Watson, ACT 2602

home by holly

## Sold Unit

Thursday, 19 October 2023

65/20 Federal Highway, Watson, ACT 2602

**Bedrooms: 3**

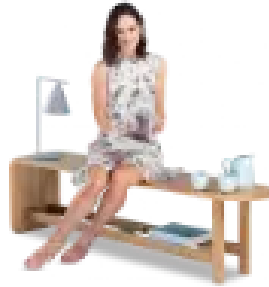
**Bathrooms: 2**

**Parkings: 2**

**Type: Unit**



Sally Strang + Ash Costello  
0491850701



Ash Costello  
0491850701

**\$522,500**

#soldbysally #soldbyash \$522,500 There are fond memories of the Starlight drive-in, when Canberran's picked up their dates or piled their kids in the car and headed out for a night beneath the stars and the big screen. Speakers were hung on the sides of classic cars and there was a heady combo of steamy windows, romance and popcorn. Set within the old Starlight drive-in cinema, complete with original and restored iconic signage, there is an emotive connection with the laid-back, convivial spirit of times past. Neat white villas rest within pretty landscaped gardens, with peaceful paths ambling past clipped topiary shrubs. Communal areas foster neighbourly connection, including a sparkling pool to gather around on hot summer days. This bright three-bedroom home encapsulates relaxed, family friendly living. Despite its coveted inner-north locale, the home emanates the calm of nature and nudges the bush land of Mount Majura. Whisper close to the local EPIC markets, the dynamic Braddon and Dickson precincts and with transport at your door, including the light rail which whisks you straight to the CBD, the home combines suburban community living with dynamic city engagement. Set on one level, with open plan living, plenty of windows and flowing to a deep veranda, there is a wonderful connection to the outdoors. Updated flooring with a natural palette bring nature inside and lending a serene air. There is a lovely ingress of light and an ideal sociability, creating a warm space to gather and chill with family and friends, drifting outside to relax in the tranquil surrounds. There are three welcoming bedrooms, the master with ensuite and an additional handsome family bathroom. The duo of rooms that occupy the rear of the home are characterised by windows that frame nature, drawing the eye outside. Think of stepping out to greet the morning, nursing a warm cuppa, surrounded by birdsong and greenery. Located in Watson; a vibrant, inner-north suburb with great community vibes, fabulous local shops, plenty of playgrounds and parks and is surrounded by natural reserves. Enjoy great coffee, fabulous pizza at The Knox, or dine out at the Filipino eatery, Lola and Lola. The home is a nice stroll to Exhibition Park, host to the famous Farmer's Market. Majura Nature Reserve is nearby, and the home is just a stone's throw from the Dickson and Braddon precincts, ANU and the CBD. This home is convenient to a mix of private and public schools, close to transport, including the light rail, linking you to the metro city station and the whole of Canberra. features.. beautiful three-bedroom, ground floor apartment within the coveted 'Starlight' complex. light and bright with wonderful flow to outside on two sides. expansive open plan living, dining, kitchen. north facing aspect. modern kitchen with marble bench tops and stainless steel appliances. ensuite to the master bedroom. master bedroom opens up to balcony. two secure car parks and storage, plus easy visitor parking within the complex. inground pool, sitting area and established gardens. walk to Mount Majura nature reserve, walking tracks, Majura Rise Pond and play area, plus the off-leash dog area. within walking distance of the wonderful local Watson shopping centre, fabulous cafes, a great choice of schools, sporting facilities and public transport, including the light rail. walk to EPIC and the Farmer's markets. easy drive to Dickson, Gungahlin and the CBD. eer 3.5. living 101m2. body corp \$1690 per quarter (approx.). rates \$442 per quarter (approx.)