

65 Maclachlan Street, Holder, ACT 2611



Townhouse For Sale

Wednesday, 12 June 2024

65 Maclachlan Street, Holder, ACT 2611

Bedrooms: 2

Bathrooms: 1

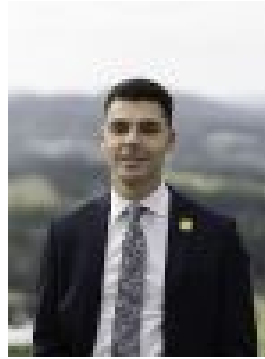
Parkings: 1

Area: 107 m2

Type: Townhouse



Alec Brown
0406866007



Kaine Walters
0450146538

\$589,000+

*To be sold on or before Auction on Wednesday 19th June at 5:00pm, In Room 146 Scollay Street Greenway*Discover the epitome of convenient living in this townhouse nestled in Holder. What sets it apart? A separate title grants you the freedom and independence you desire. Crafted in 1978 by the esteemed Willemsen, this architectural gem stands as a testament to timeless design.Step inside to find an open and bright expanse where living, dining, and kitchen harmoniously blend. The abundance of windows infuses the space with natural light, creating an inviting ambiance that soothes the soul. Behold the original kitchen, meticulously maintained and boasting ample storage-a chef's delight.Journey to the second floor where tranquility awaits in the segregated bedrooms, each adorned with built-in wardrobes for your organisational needs. The bathrooms offer a sanctuary for daily rituals, enhancing everyday living with their thoughtful amenities.Outside, discover low-maintenance yet private front and rear courtyards, beckoning you to unwind in peace. Whether hosting gatherings or seeking solace, outdoor entertaining becomes effortless in this serene haven.Embrace the ease and elegance of Holder living-your ideal retreat awaits.Property Features Include:• Open and bright living, dining and kitchen• An array of windows making the home warm, welcoming and filled with natural light• Pristine and meticulously maintained original kitchen with ample storage • Kitchen fitted with electric cooktop, oven and dishwasher• Bedrooms segregated to the second floor both with built in wardrobes• Bathrooms provide facilities for making everyday living a breeze• Low maintenance and private front and rear courtyards• Outdoor entertaining is easy to accommodate or create your own retreat • Architecturally designed by Willemsen and built in 1978• Split system installed in the living room and bedroom one• Rates: \$3,089.62pa• Land Tax: \$5,228.20pa (Investors only) • Strata: Separate Title, no strata fees • UV: \$461,000 (2023)• EER: 1.5• Living: 107.70sqm • Carport & storeroom: 23.56sqm• Block: 180sqm Close proximity to: • Cooleman Court• Local restaurants, cafes and take away• Canberra Hospital• Woden Westfield • Saint Jude's Primary School• Duffy Primary School • St. John Vianney's Primary School• Arawang Primary School• Stromlo High School• Weston Indoor Sports Centre• Sporting ovals, parks and bike/foot paths• Arterial roads, express routes on public transportDisclaimer: All information regarding this property is from sources we believe to be accurate, however we cannot guarantee its accuracy. Interested persons should make and rely on their own enquiries in relation to inclusions, figures, measurements, dimensions, layout, furniture and descriptions.