

65 Old Forestry Road, Whyanbeel, Qld 4873



House For Sale

Friday, 5 January 2024

65 Old Forestry Road, Whyanbeel, Qld 4873

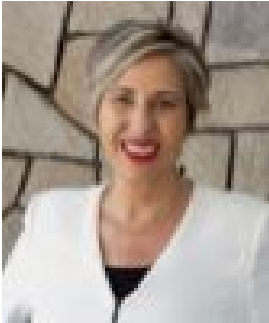
Bedrooms: 3

Bathrooms: 3

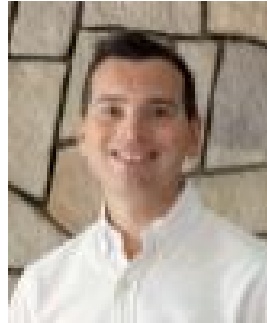
Parkings: 2

Area: 6 m2

Type: House



Soula Kazakis
0740982507



Lee Tartaglia
0499043311

\$1,850,000

Nestled in the Whyanbeel foothills and just 25 minutes from Port Douglas, this extraordinary property offers retreat-style living without compromising on the comforts of a modern Australian home. Located on 6.48 hectares (16 acres) of land, Shambala offers future owners a true sense of peace with a beautifully designed home that perfectly blends the outdoors with the indoors. Three main pavilions are connected by covered walkways, providing an endless supply of fresh rainforest breezes and natural light. Dramatic vaulted ceilings and tasteful timber accents throughout add a true sense of place to the home. The first pavilion features the primary suite, complete with a spacious ensuite, spa bath, walk-in robes and private balcony. The central pavilion is the heart of the home. The contemporary kitchen is a gourmand's delight, complete with stone benchtops and updated appliances. A spacious indoor dining and living area blends seamlessly into the outdoor dining and living area, featuring views of the pool and lush rainforest surroundings. An adjacent indoor media room is ideal for cozy nights in. The third and final pavilion houses two additional bedrooms, both with ensuite bathrooms and access to a shared balcony. Despite all of its beautiful indoor features, future owners will likely spend most of their time enjoying Shambala's outdoor spaces. From afternoon dips in the infinity edged pool that overlooks the property's lush rainforest surrounds, to dinners al fresco in the covered outdoor dining room (featuring perfectly maintained timber decking), the home was designed to embrace its location. Beyond the edge of the pool is your private rainforest valley. Future owners will also delight in the Shambala's conveniences, such as the double carport, separate office space and built-in laundry facilities. This home and all of its features offer unparalleled versatility and choice; it would suit as a part-time home for city-dwellers seeking a peaceful escape, a full time home for those seeking land and space, or a self-managed holiday property for someone seeking entry into the local holiday-rental market. Not often do you have an opportunity to own a property with the same acreage, architecture and location as Shambala. Contact Soula Kazakis on 0422 966 573 or Lee Tartaglia on 0499 043 311 to arrange your inspection. At a Glance • Chris Van Dyke Designs • 16 Acres • Separate Primary Bedroom Wing • Media Room • Surrounded By Tropical Rainforest • 25 Minutes North of Port Douglas • 16 Minutes North of Mossman