

65 Sheehan Crescent, Shepparton, Vic 3630

Sold House

Wednesday, 20 September 2023

65 Sheehan Crescent, Shepparton, Vic 3630

Bedrooms: 3

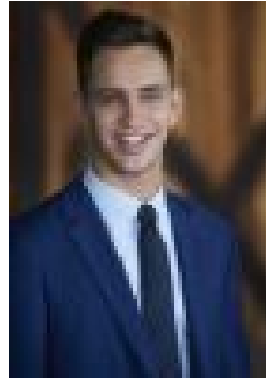
Bathrooms: 1

Area: 519 m2

Type: House



Sean Reidy
0358311800



Adam McCurdy
0358311800

Contact agent

Situated in South Shepparton only a short walk to Colliver Road shopping strip, Broken River walking tracks & Lake Victoria, this structurally sound property is ready for a new facelift! Offering 3 bedrooms with O/H Fans, Kitchen with gas upright cooktop & oven & dining space, Living area, Bathroom with shower bath & laundry with separate toilet. Outside provides a large concrete driveway for multiple car parks plus access to rear yard, decked alfresco area, fully fenced & secure yard all on 519m² allotment. A great starter for the first home buyer or investor!