

65 Symons Drive, Callignee, Vic 3844

Sold House

Wednesday, 20 September 2023

65 Symons Drive, Callignee, Vic 3844

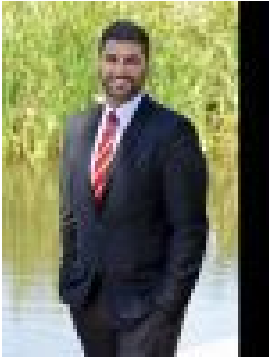
Bedrooms: 5

Bathrooms: 3

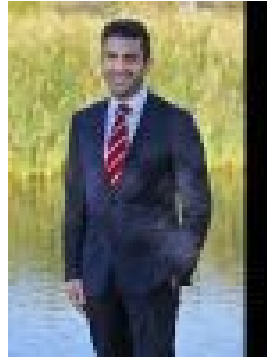
Parkings: 8

Area: 3 m2

Type: House



Jorjesen Demetrios
0488058020



George Demetrios
0351741833

\$1,630,000

Situated on 9.3 Acres with panoramic views this custom built & designed home at 65 Symons Drive, Callignee has something for everyone.+ A Modern but timeless designed & floor plan, no detail has been overlooked in this beautiful home with high end quality throughout. Cathedral ceilings and an abundance of natural light that pours in from the doubled glazed windows+ Four-bedroom residence with private master offering breath-taking views and desirable ensuite with free standing bath, walk-in shower with bench seat + Intelligently thought-out layout with remaining bedrooms and second living space detached from the master suite.+ The impressive dream kitchen is set up with a classic Falcon oven & cooker, farmhouse sink, over sized stone bench tops and brilliant butler's pantry perfect for the home cook or entertainer.+ The heart of this luxurious home is within the open plan living and dining the warmth of two fireplaces and fantastic outdoor alfresco that flows effortlessly from internal to external.+ 8m x 7m double garage with extra storage and direct internal access to the home+ Boasting a huge 25m x 12m shed with power, dual living capability of a 1 x bedroom studio with bathroom, kitchen, dishwasher, solid fuel heater & split system cooling.+ To accompany the homes dream kitchen the shed features the dream man cave, bar & workshop with pot belly and room for 4 vehicles, this is the definition of a genuine man cave.+ Well established 9.3 acres surrounded with good rural fencing, 8 additional water tanks and all within a 15-minute drive to Traralgon CBD.This remarkable 40sqm property is all class and must be inspected to truly be appreciated.Jorjesen Demetrios 0488 058 020George Demetrios 0413 776 303Stockdale & Leggo Latrobe Valley“*We see more than property*”.