

66b The Esplanade, Portarlington, Vic 3223

House For Sale

Tuesday, 14 May 2024



66b The Esplanade, Portarlington, Vic 3223

Bedrooms: 3

Bathrooms: 2

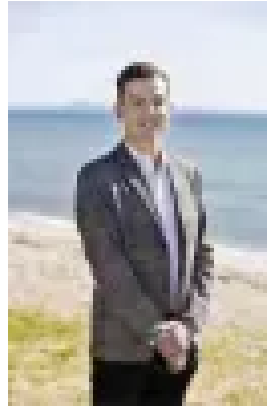
Parkings: 2

Area: 299 m2

Type: House



Trevor McManus
0352571778



Bailey Grace
0352571778

\$2,350,000

Inspection by private appointment! This exceptional property presents an unparalleled opportunity to own a sophisticated two-story, three-bedroom residence on The Esplanade. Its contemporary architectural design, marked by clean lines and a minimalist aesthetic, elevates waterfront living to new heights. Boasting a striking facade that harmonizes with its coastal setting, this home epitomizes high-end living. Generous use of light and space creates a serene atmosphere, perfect for relaxation. Expansive windows and sliding doors flood the open-plan living and dining area with natural light, offering breathtaking vistas of the Melbourne city skyline. The kitchen sets a new standard with Siemens wall oven, electric cook-top, Bosch dishwasher, and sleek stone countertops. Stylish bathrooms feature premium finishes, including exquisite stone countertops and floor-to-ceiling tiles. The main bathroom indulges with a large shower and a spacious freestanding bath. Adding to its allure, the property offers rear access to a triple auto garage from Valerie Avenue, ensuring convenience and security.

Key Features:

- Italian-made Movilift for seamless access to both levels
- Butler's pantry with ample storage and appliance space
- Luxurious master suite with expansive walk-in robe and opulent en-suite
- Private designated study, plus three additional bedrooms with built-in robes
- Separate powder rooms on each level
- Ducted reverse cycle heating and cooling for year-round comfort
- Ideally situated within walking distance to cafes, primary school, shopping, and public transport

The low-maintenance outdoor space features mod wood decking, artificial turf, and exposed aggregate paths, offering a tranquil retreat. Escape the hustle and bustle of city life and embrace a luxurious lifestyle by the bay, with a ferry commute just steps away. Revel in the panoramic views and relish in a world-class coastal living experience.