

67 Meridian Circuit, Berwick, Vic 3806



House For Sale

Tuesday, 2 January 2024

67 Meridian Circuit, Berwick, Vic 3806

Bedrooms: 3

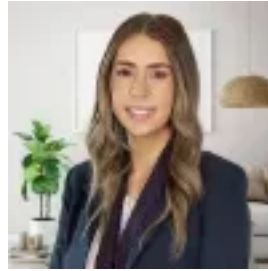
Bathrooms: 2

Parkings: 2

Type: House



Hayley Taufa
0397071400



Jess Hall
0397071400

\$660,000 - \$720,000

Built with luxury, style and functionality in mind, you can be assured of the highest standards of living when you step into this boutique home within the Eden Rise - Affinity Estate. Showcasing a contemporary design and modern colour palette, you will experience an instant warmth and homely feel. You'll also notice a sense of space with heightened ceilings and a free-flowing open plan design. To your left is the master bedroom with a walk-in robe and access to the ensuite. As you stroll down the hall you will be captivated by light as you approach the open plan living space which extends to the alfresco and a perfect space to relax. An absolute highlight of the home is the lavish kitchen with lots of bench space, quantum quartz stone benchtops, plenty of cupboards, stainless steel appliances, and all overlooking the expansive main living and dining areas. Adjoining effortlessly through sliding doors, you will enjoy an open alfresco and garden area for the whole family to enjoy. Impressive extras include central heating, evaporative cooling, plenty of storage space, remote-controlled double garage, downlights, solar hot water, ceiling/wall insulation, laminate timber flooring, and much more! Located in the boutique Affinity Estate, you're welcomed by leafy views and a sense of tranquility. Affinity provides its residents with a low-maintenance opportunity and access to facilities such as an exclusive Residents Club, which includes a gym, club bar, lap pool, spa, tennis court and party pavilion with BBQ facilities. A short stroll from your door, you will have access to Eden Rise Shopping Centre, numerous parks, treelined walking tracks, transport, the new entrance to the Monash freeway and be surrounded by some of the best education facilities Berwick has to offer. For more information please contact Hayley Taufa 0400 091 398