

**679 Denereaz Drive, Pheasant Creek, Vic 3757**

CHWYLA

**House For Sale**

Wednesday, 17 April 2024

679 Denereaz Drive, Pheasant Creek, Vic 3757

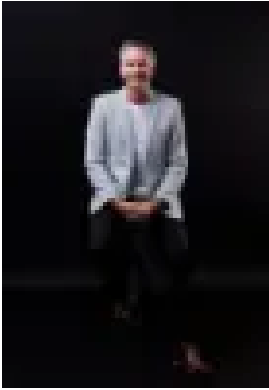
**Bedrooms: 6**

**Bathrooms: 3**

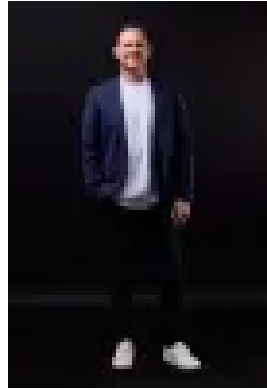
**Parkings: 3**

**Area: 2 m2**

**Type: House**



Troy Hodge  
0386009995



Paul Chwyla  
0386009995

**\$2,350,000 - \$2,550,000**

Expressions of Interest closing Wednesday 22nd of May at 7:00pm (Unless sold prior) Make more of : 6 acres Brand new, custom build Approx. 70 squares Views over surrounding bushland Six bedrooms Three bathrooms Two powder rooms Three living areas Office with handmade benchtops and built-in cabinetry Triple garage with built-in storage and heating Full length verandah Cathedral ceilings with clerestory windows High ceilings Motorised highlight windows Natural light VJ panelling Feature skirts and cornices Statement archways Barn doors Hybrid scratch resistant flooring 100% New Zealand wool carpet Handmade cement patterned tiles Handmade pendant lighting, wall sconces, LED downlights White plantation shutters Twin window seats with blanket boxes 40mm, leather finish stone to kitchen, Butler's, bathrooms, powder rooms, bar, laundry Kitchen island with double waterfalls 900mm induction cooktop with pot filler tap Dual ovens Two dishwashers Soft-close and push to open overhead cabinetry Galley kitchen Billi filtered water dispenser: boiling, chilled, sparkling Three stage water filtration system Commercial return hot water system throughout Shaw's double bowl fireclay sinks Additional walk-in pantry with adjustable shelves Oversized laundry with significant cabinetry Two bedrooms with fitted out walk-in robes Four bedrooms with built-in robes Mud room with storage lockers and handmade benchtops Four door linen cupboard with adjustable shelving Terrazzo bathroom tiles Concrete basins Anti-fog LED mirrors Curved glass shower screens Rainwater showerheads Heated towel rails Wall hung toilets Bar Soundproof, double insulated theatre room with 3.77m ceilings Prewired for Dolby Atmos theatre system Sound insulation to internal walls Wood fire with fan Ducted heating with 16 zones Two refrigerated cooling systems with 16 zones Ceiling fans throughout Double glazed windows throughout Control room with data wiring for house Starlink satellite internet Covered alfresco with views, ceiling fan Brand new landscaping Fresh turf Bore and pump 211,000L worth of water tanks 51 solar panels totalling 22.44kW Three phase power Electrical provisions for shed Surrounded by high end homes Private location 1.9km to Pheasant Creek General Store, Flying Tarts Bakery 5.5km to Flour Flower Bakery 8.4km to Bollygum Park 18 minutes to Whittlesea 30 minutes to Yarra Valley The initial appeal – The statement kitchen with a galley kitchen, the Village-grade cinema room, refrigerated cooling and ducted heating with 16 zones, a triple garage, etc, etc, etc. Just drop an infinity edge pool with a swim up bar so you can soak up this view. The main attraction – A brand new, so very custom, Pheasant Creek masterpiece on 6 acres with bushland views. There's so much to say, but one step inside and you'll feel the design detail, and the love, care and thought that has gone into creating something so special. Every single feature has been selected with purpose. We are all about the cathedral ceilings, the hidden bar, handmade tiles, leather-finish stone, pot-filler tap, and a home with curves in all the right places [statement archways, curved glass shower screens, demi-round feature panelling and arched wall niches]. Your journey here starts this Saturday.