

68/1 Mouat Street, Lyneham, ACT 2602

home by holly

Apartment For Sale

Friday, 15 March 2024

68/1 Mouat Street, Lyneham, ACT 2602

Bedrooms: 2

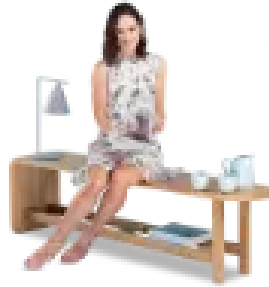
Bathrooms: 1

Parkings: 1

Type: Apartment



Sally Strang + Ash Costello
0491850701



Ash Costello
0491850701

\$505,000+

Walls of glazing offer hypnotic views across Canberra to undulating mountain ranges. Think epic skylines, twinkling lights, vast blue skies and an everchanging show of weather and light. Nicely sequestered away from the busyness of Northbourne Avenue, and with stunning uninterrupted views, this modern two-bedroom apartment is a peaceful zone of soothing whites, natural stone, with a playful dose of mosaic reds. Ideally located and housed in the elegant Axis, this refined urban home, floats you above while being seeded within the vibrant inner north. The coveted locale places you within arm's reach of a network of cafes, bars, shops and restaurants. Shared biking and walking trails wend through conservation wetlands, and green spaces, creating the perfect combo of city vibrancy and village peace. Mosaic columns meet organic tiled floors as 25-metre swimming pool bounces aquatic light onto walls of glass. The foyer of the famous Axis apartments serving up marble floors, bright blue sculpted pendant lighting, sleek stainless-steel lifts. Finished to the highest standards, Axis is famed for its voluminous modern architecture, impressive, sleek curved frontage. The lap-pool, gymnasium and beautifully landscaped barbecue areas, shared gardens, foster a wonderful lifestyle and community. Within it is all peaceful silence and serenity, belying the coveted inner-city locale. Drenched in northern light, the open arrangement feels light and airy, informed by the full sweep of those dramatic views. One imagines long summer evenings spent chilling on the balcony, an easy to-and-thro from the kitchen as drinks are served, and time with family and friends is savoured. The perfectly arranged kitchen is finished in a chic combo of organic greys, warm timber with feature red mosaic splashbacks. Quality appliances from Bosch combine with generous stone bench tops. A European laundry and full-height pantry seamlessly incorporated. Open-air ventilation and epic views inform the master bedroom with its drift to floating balcony. Both bedrooms have ample storage to hide the mess, exacting the meticulous minimal vibe. The adjacent bathroom is a soothing mix of luxurious finishes - marble counters, floor to ceiling tiling and dramatic notes of signature lipstick red. The central locale of this coveted inner north suburb gifts an exciting urban lifestyle, connecting you to the independent eateries and bars of O'Connor shops, and the Braddon and Dickson precincts. It is a scenic walk to Lyneham shops and the iconic Tilley's for long brunches and the occasional live Jazz on Saturday evenings and The Front for great coffee. The light rail is at your doorstep whisking you easily to the CBD and the metro city station connecting you to the whole of Canberra. Ample green spaces, shared bike and walking paths, wetlands, and established street trees create a tranquil village experience in the heart of the metropolis. features...stylish and generously proportioned two-bedroom apartment in the secure Axis apartment complex. panoramic views across Canberra and out to mountain ranges. sequestered and quiet (furthest tower from Northbourne Avenue). light filled and airy with high ceilings. open plan living, dining, kitchen flowing to balcony. bedroom one, with wall of mirrored robes, opens to balcony and views. bedroom two with built-in-robe. gorgeous bathroom with marble counter tops and floor to ceiling tiling. modern kitchen with ample cabinetry plus full-height double pantry, stone benchtops, stainless steel appliances from Bosch, including wall oven, induction cooktop, integrated rangehood and dishwasher. European laundry. reverse cycle electric heating and cooling. intercom access. 25 metre indoor pool, gym, and shared barbecue areas. secure basement car parking and storage. short walk to the Dickson and Braddon precincts. leafy stroll to Lyneham shops and café's. close to parks, ovals, and wetlands. a few steps from Lyneham High School. close to transport including the light rail whisking you straight to the CBD. living size 78m2 + balcony 8m2. eer 6. strata \$1652 per quarter (approx).. rates \$458 per quarter (approx).