

68 Central Park Drive, Bow Bowling, NSW 2566

Sold House

Friday, 19 January 2024



68 Central Park Drive, Bow Bowling, NSW 2566

Bedrooms: 3

Bathrooms: 1

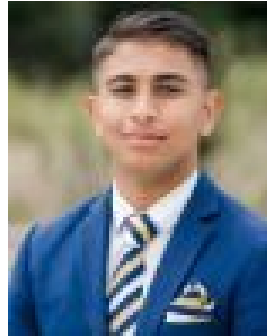
Parkings: 2

Area: 609 m2

Type: House



Murari Lamsal
0433755012



Suprem Lamsal

\$830,000

Murari Lamsal, & Suprem Lamsal from Expert Estate Agents Ingleburn are proud to present this beautiful single storey family home located within the beautiful suburb of Bow-Bowing. Welcome to this charming three-bedroom, one-bathroom residence situated on a spacious 609 square meters of land, this property is designed to meet the discerning needs of families seeking a stylish and convenient living space. Featuring a easy to maintain out-door area, this is a home you don't want to miss out on. Key Features: 609Sqm Land Size 2 bedrooms, each equipped with built-in robes Well-designed home with separate living and dining Kitchen featuring horseshoe design for extra versatility and added storage Study Nook Split system air-con for climate control double lock up garage Large outdoor entertainment area. Proximities: 5 - mins drive to Minto Shopping Mall 5 - Min Drive to Minto train station The outdoor backyard area is a true highlight of this property. Step outside, and you'll find a beautifully landscaped oasis, perfect for relaxation and outdoor activities. Whether you enjoy gardening, entertaining guests, or simply lounging in the sun, this backyard offers a serene and private space to enjoy the outdoors. For inquiries or to express your interest in this exceptional property, please contact: Murari Lamsal: 0433 755 012 Suprem Lamsal: 0426 577 272 Disclaimer: The information presented has been furnished from sources we deem to be reliable. We have not verified whether the information is accurate and do not accept any responsibility to any person and do no more than pass it on. All interested parties should rely on their own enquiries to determine the.