

68 Colville Street, Greenbank, Qld 4124



Sold House

Sunday, 22 October 2023

68 Colville Street, Greenbank, Qld 4124

Bedrooms: 4

Bathrooms: 2

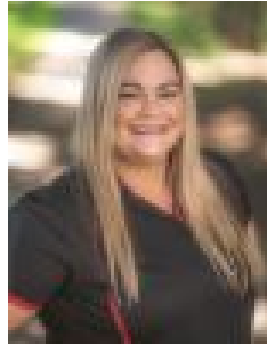
Parkings: 2

Area: 388 m2

Type: House



Neil Giles



Candice Le
0405269163

\$650,000

If you want an ideally located investment property in the ever popular Harvest Rise Estate look no further than 68 Colville Street Greenbank. This Fully tiled and tasteful decorated home features 4 bedrooms, the air conditioned main has a ceiling fan, walk-in robe and ensuite, the other 3 bedrooms have built-in wardrobes and ceiling fans and our services by the family bathroom. Also featured is an air conditioned open plan living area comprising of lounge and dining area adjacent to the kitchen with electric under-bench oven, ceramic stovetop above, rangehood, double pantry, adequate quantity of cupboard and bench space plus fridge and dishwasher. The property also includes an outdoor alfresco area with ceiling fan, remote double lock-up garage with internal access, internal laundry, security on all windows and doors, garden shed, solar hot water and all situated on a fully fenced 388 m² allotment with low maintenance gardens. The property is currently tenanted at \$550.00 per week until early January 2024. The local area has well established infrastructure and is set to experience future residential growth. Situated within a short distance to Park Ridge Shopping complex, Park Ridge High and Primary Schools, Parklands Christian College, childcare centres and the Park Ridge Park 'N' Ride bus terminal. The main shopping complex is Grand Plaza at Browns Plains, which also hosts the bus terminal which services the city and surrounding areas. Adjacent to Grand Plaza is the new Village Square which has a unique main street design offering convenience retail, alfresco dining and a village atmosphere to local residents. Offering numerous parks, service clubs and sporting and recreational facilities the recently completed Logan Metro Sports Centre is a first class venue and a great addition to the sporting facilities available in the area. The Logan and Gateway Motorways provide easy access to the Brisbane Airport (30 minutes), Sunshine Coast (60 minutes) and the Gold Coast (40 minutes)