

**68 Grevillea Crescent, Hoppers Crossing, Vic 3029**



**House For Sale**

Friday, 9 February 2024

68 Grevillea Crescent, Hoppers Crossing, Vic 3029

**Bedrooms: 5**

**Bathrooms: 3**

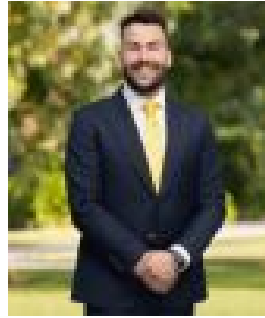
**Parkings: 2**

**Area: 700 m2**

**Type: House**



John Camilleri  
0414778940



Petar Krnjeta  
0406912320

**\$710,000 - \$750,000**

John Camilleri, Petar Krnjeta and Ray White Werribee proudly present 68 Grevillea Crescent, Hoppers Crossing. This double-storey residence boasts accommodation for five bedrooms, three bathrooms, and double car garage with drive through access all on 700m<sup>2</sup>(approx.) land size. Located in the sought-after Kingston Gardens estate of Hoppers Crossing, this home enjoys a pleasant and convenient location that enhances the overall living experience. The well-appointed kitchen of this home is a haven for chefs. It boasts contemporary appliances such as built-in oven, gas cooktop, and dishwasher, ensuring a seamless cooking experience. Noteworthy elements of the kitchen include a pantry for efficient storage, overhead cupboards for organization, and a spacious bench for on-the-go meals and meal preparation make it a functional space. The main bedroom provides comfort and privacy for the homeowners, featuring a walk-in robe and a cosy ensuite bathroom. The remaining four generously sized bedrooms have convenient access to the central bathroom and additional 3rd downstairs bathroom, while are equipped with built-in robes, offering ample storage space for your wardrobe essentials. Enjoy the versatility of the formal lounge room thoughtfully designed to cater to diverse needs and lifestyles. The interconnected kitchen and dining area offers a generous space for hosting quality family dinners. Unveil the irresistible charm of the outdoor entertaining pergola area, an inviting space perfect for hosting gatherings or simply relishing in the warmth of the sun and refreshing breezes. The expansive backyard, adjoining the scenic Skeleton Waterholes Creek, boasts maintained landscaping that creates a tranquil oasis, offering a serene escape from the daily hustle and bustle. Other significant features of this home include a double garage for secure parking, ducted heating, and split system cooling ensuring year-round comfort. Nestled in Hoppers Crossing, this property advantages from the nearby amenities. Within a short distance, discover esteemed schools, bustling shopping centres, picturesque parks, and recreational facilities, catering to the needs of the entire family while offering convenience and entertainment. Effortlessly connect to public transportation and major road networks, facilitating smooth commuting to the city and neighbouring areas. With its remarkable features and enviable location, 68 Grevillea Crescent presents an exceptional opportunity for those in search of a comfortable and conveniently situated family home in Hoppers Crossing. Note. All stated dimensions are approximate only. Particulars given are for general information only and do not constitute any representation on the part of the vendor or agent. Any school zoning stated based on [www.findmyschool.vic.gov.au](http://www.findmyschool.vic.gov.au) as of 20/07/2023 subject to change.