

# 68 Ivanhoe Parade, Ivanhoe, Vic 3079

## House For Sale

Tuesday, 6 February 2024

Miles  
EST. 1924

68 Ivanhoe Parade, Ivanhoe, Vic 3079

Bedrooms: 5

Bathrooms: 2

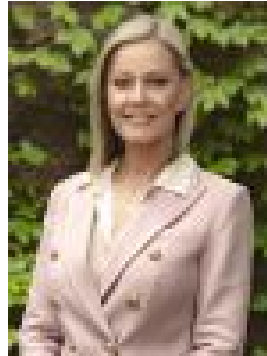
Parkings: 2

Area: 627 m2

Type: House



Stewart Oldmeadow  
0394973222



Leanne Bradford  
0394900592

**\$2,400,000-\$2,500,000**

Separate living zones, multiple alfresco decks, spectacular city views and a superb studio/office highlight the outstanding opportunity presented by this large and light five bedroom family residence. Architecturally designed at a premium Ivanhoe address, this extensive split-level home in a leafy established garden setting combines modern aesthetics, open-plan space and quality features in an elevated position crowned by a sweeping city skyline vista. A soaring entry void creates a sensational entree to an impressive interior spread over two inviting levels. The ground-floor zone features a central living room accessing an entertainment deck that's complemented by three sizable bedrooms with built-in robes, a bathroom, powder room and a full laundry. The free-flowing upstairs domain with a second powder room includes two bedrooms (main with a walk-in robe and stunning double-shower ensuite, second with built-in robes), mother of pearl granite-finished kitchen integrating European stainless-steel appliances, and a fabulous family/dining area on a polished timber floor. Sliding doors onto an elevated deck reveal a scintillating outlook capturing the brilliance of the CBD and surrounds with dramatic sunsets, New Year's fireworks and glittering city night lights. At the rear is a separate air-conditioned studio for work or hobbies beside a powder room, workshop and sunny alfresco deck, while there's rear lane ROW plus a street-side double carport. Also offers ducted heating/cooling, abundant storage, no-mow gardens and rainwater tank. Cleverly conceived for family harmony and outdoor entertaining in secluded surroundings, this lifestyle sanctuary desirably situated within walking distance to Ivanhoe's grammar and primary schools, boutique retail-cafe precinct, train station, aquatic centre, parklands and Heidelberg's hospitals. Miles Real Estate.