

**68 Maple Street, Albion Park Rail, NSW 2527**

**Sold House**

Thursday, 9 November 2023

**Professionals**

68 Maple Street, Albion Park Rail, NSW 2527

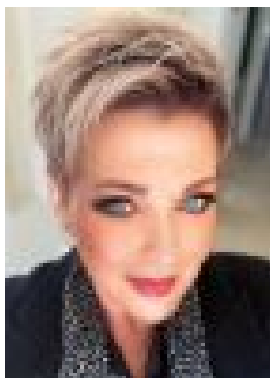
**Bedrooms: 4**

**Bathrooms: 1**

**Parkings: 2**

**Area: 559 m2**

**Type: House**



Pamela Muller



Phillip Muller  
0412446817

## Contact agent

Welcome to 68 Maple Street Albion Park Rail! This charming 4-bedroom home is now available for sale. With a spacious land area of 559.61 sqm, this property offers plenty of room for your family to grow and enjoy. As you enter the house, you'll be greeted by a cozy living space with beautiful floorboards and ample natural light. The kitchen is well equipped and includes a new upright stove, making meal preparation a breeze. The internal laundry provides convenience and practicality. The property features four well-sized bedrooms, perfect for accommodating a growing family or hosting guests. The fully fenced backyard offers privacy and security, with a lovely garden and grassy area for outdoor activities. You'll also find a huge covered alfresco area, providing the ideal space for entertaining or relaxing. With a double garage, you'll have plenty of space for parking and storage. The property is equipped with air conditioning, ensuring comfort all year round. Being single level, this property offers easy access and convenience. The surrounding neighbourhood is peaceful and family-friendly, with nearby amenities such as schools, shops, and parks. Don't miss the opportunity to make this property your new home. Perfect for the occupier buyer or investor, come along to the open home and see for yourself.