

**68 North Street, Mount Lofty, Qld 4350**



**Sold House**

Thursday, 12 October 2023

68 North Street, Mount Lofty, Qld 4350

**Bedrooms: 4**

**Bathrooms: 1**

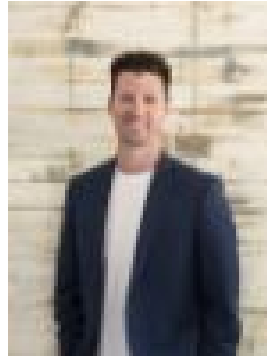
**Parkings: 1**

**Area: 825 m2**

**Type: House**



Cooper Watson  
0497170749



Elliot Scholefield  
0415458874

**\$565,000**

Renovated and situated in the leafy streets of Mount Lofty, this impressively spacious, open and airy four bedroom residence manages to merge a family-friendly sense of proportion with the single level, easy care alfresco joy so craved by the modern family. Light filled and crafted for indoor-outdoor integration, the house has been renewed ensuring you have nothing to do but move in and enjoy the fruits of this coveted location. A welcoming North facing porch is the first eye catching feature you will see and where you will enjoy the sunrise with your morning coffee. Through the front doors you will have direct access to the main living area full of light and style with VJ wall panelling and timber flooring. Adjacent from the living room is a combined dining and kitchen space that is complete with stainless steel cooking appliances and an incredible amount of storage space. Overall, all areas work together to provide a great central space for the family to utilise and enjoy. Complemented by a modern family bathroom where a walk-in shower complete with rainwater shower rose sits with a generous vanity with loads of storage. This gorgeous family home consists of 4 bedrooms all featuring ceiling fans and three with built ins. The fully fenced, terraced backyard and covered outdoor entertaining area is where you will find yourself enjoying many evenings with friends and family. Make the move to this convenient address in Mount Lofty, where you're minutes from local cafes and a short drive to local shops and many parks. Overall, the property features:- Fantastic size 825 m2 block- North facing Porch- Open plan kitchen/dining- 4 bedroom home with ceiling fans- Featuring timber flooring and VJ wall panelling- Light & airy throughout- Wood fire heater and air conditioning- Solarhart - 6.0 x 3.0 Shed and 3.0 x 3.0m shed- Sought after location close to amenities- East Toowoomba State School Catchment RealWay Property Partners proudly present 68 North Street, Mount Lofty to the market. For more information or to arrange a private inspection, please call our team on 0415 458 874.