

**68 Popondetta Road, Whalan, NSW 2770**



**House For Sale**

Thursday, 9 May 2024

68 Popondetta Road, Whalan, NSW 2770

**Bedrooms: 6**

**Bathrooms: 2**

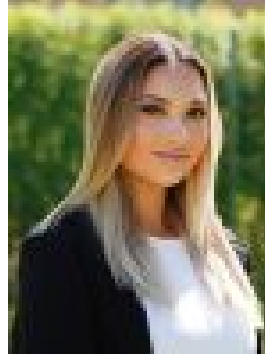
**Parkings: 4**

**Area: 607 m2**

**Type: House**



Jojo Kendell  
0296755001



Jody Wells  
0414503217

## JUST LISTED!

Jojo Kendell & Jody Wells from Elite Agency are proud to offer this excellent opportunity for an investor or first home buyer to secure this well maintained four bedroom family home with a separate 2 bedrooms retreat on a large 607 sqm block of land. Located in close proximity to Emerton Shopping Village, Emerton Leisure centre, schools, and transport. A short drive to Plumpton Marketplace and Mount Druitt Westfield and train station. - Four generous sized bedrooms all with ceiling fans & one built-in wardrobe - Spacious lounge room with split system air conditioning - Updated kitchen with gas cooktop, tiled splashback & ample cupboard space - Dining room leading off the kitchen - Separate toilet and internal laundry - Double carport - Land size 607 sqm - Currently rented for \$550 per week - Solar system, Downlights, carpet, floating timber flooring, gate

**Retreat Features:-** Two Spacious bedrooms - Open plan lounge/dining area - Bathroom with laundry area - Kitchenette, Downlights, tile flooring

**What's Nearby:-** Plumpton Marketplace - Emerton Village - Sydney Coliseum Theatre - Sydney Gymnastic & Aquatic Centre - Richard Johnson Anglican School - Good shepherd primary school - St Clair catholic school - Baitul Huda Mosque - Mount Druitt Hospital - Westlink M7 off Richmond Road - Sydney Business Park (Costco, Ikea and so much more!!)

**For More Information Contact:** Jody Wells 0414 503 217 JoJo Kendell 0433 277 304 Mark Santos 0435 546 873

**Disclaimer:** We have been furnished with the above information; however, Ray White Mount Druitt gives no guarantees, undertakings or warnings concerning the accuracy, completeness or up-to-date nature of the information provided. All interested parties are responsible for their own independent enquiries in order to determine whether or not this information is in fact accurate.