

680 Blende Street, Broken Hill, NSW 2880

CENTURY 21

Sold House

Friday, 27 October 2023

680 Blende Street, Broken Hill, NSW 2880

Bedrooms: 4

Bathrooms: 2

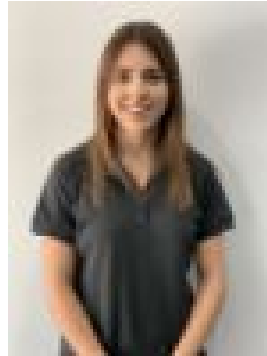
Parkings: 6

Area: 1012 m2

Type: House



Matthew Handberg
0880872297



Shelby Pryor
0880872297

Contact agent

680 Blende Street presents the opportunity to secure a complete family home in a quiet location of North Broken Hill. The immaculate home comprises four generous bedrooms all with quality build in wardrobes. The spacious family lounge room along with the rest of the home is kept comfortable year round by the ducted reverse cycle heating and cooling with controlled zoning. The kitchen is sure to impress the home cook with ample bench space, electric appliances and breakfast bar. The dining space is included and offers views of the immaculate grounds. The family bathroom includes spa bath, shower, and vanity. Separate laundry and WC. Externally you will be impressed by the immaculate lawned areas and low maintenance gardens. The 8m x 12m (approx.) shed / workshop has concrete floors, power and ample lights along with its own bathroom with both a shower recess and toilet. There is vehicle access via double sliding doors leading onto the laneway. The home is further enhanced by automated watering system, solar panels and secure fencing. If you're in the market for a substantial family home with all the work done your inspection of 680 Blende Street is sure to impress.

Please see link below to make an offer on this

property <https://www.cognitoforms.com/century21mcleods/century21mcleodsbrokenhill> We have obtained all information in this document from sources we believe to be reliable; however, we cannot guarantee its accuracy.

Prospective purchasers are advised to carry out their own investigations. Council Rates: approx. \$1,536 per annum Water Rates: approx. \$900 per annum Agents Note: The property will remain on the market and offers will be presented to the vendor/s up until an exchange of contract has occurred.