

**6802/162 Ross Street, Forest Lodge, NSW 2037**



**Sold Apartment**

Tuesday, 14 November 2023

6802/162 Ross Street, Forest Lodge, NSW 2037

**Bedrooms: 3**

**Bathrooms: 2**

**Parkings: 2**

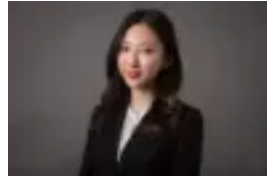
**Area: 145 m2**

**Type: Apartment**



Jeffrey Li

0298848228



Reika Morikawa

0298848228

**\$2,300,000**

This superior 3 bedroom residence occupies a top floor position boasts an ideal north aspect and a free flowing floor plan. This is a perfect match for the downsizers or growing young families. Well-proportioned & presented, providing the best inner city living lifestyle and convenience. Maestro- is located within the award winning "Mirvac" Harold Park development. It embraces a seamless open plan indoor/outdoor design for sleek entertaining while boasting a cosmopolitan lifestyle with a focus on community. Stroll just 300m to the Tramsheds for a coffee, gelato or lovely dinner with friends.

- Bright North facing corner unit with 2 separate balconies
- Visionary architectural design and expert craftsmanship by Mirvac
- Bespoke joinery, upgraded finishes, thoughtful design inclusions
- Luxurious bathrooms, huge Ensuite with double sinks and full bath
- Oversized internal laundry, ducted aircon system
- Chef quality fully appointed kitchen with island bench, Miele stainless appliances including dishwasher, microwave, 900mm oven with 5 burner gas cooktop
- Local Tramsheds includes supermarket, gym, medical centre
- Within a 10-minute walk to light rail and foreshore reserves
- Glebe Markets, Broadway Shopping Centre, universities all within 3km