

# 68A Schofields Farm Road, Schofields, NSW 2762

## House For Sale

Saturday, 3 February 2024



68A Schofields Farm Road, Schofields, NSW 2762

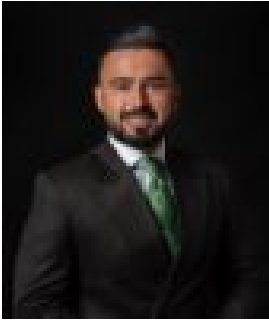
Bedrooms: 4

Bathrooms: 2

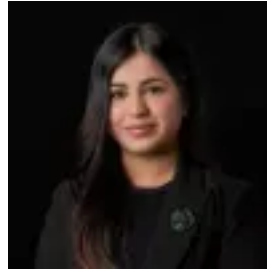
Parkings: 1

Area: 378 m2

Type: House



Amit Kumar  
0288964336



Siya Sachdeva  
0288964336

## Price Guide \$1,125,000

With a convenient location that is second to none and a home designed to showcase maximum use of space for the family with 378 sqm land, offers a welcoming and comfortable lifestyle in the sought-after neighbourhood of Schofields, creating an ideal sense of space for growing or multigenerational families. The home is within a 5 minute safe walk to Schofields Public School and a short walk to local shops and Schofields Train Station. As you step inside you will be greeted by the formal living room providing one of many spaces where you get to sit back and relax, followed by the designated study area perfect for those who work or study from home. With a front-facing kitchen, this seamlessly combines the dining area and living room creating the perfect space for quality time with the family. The outdoor undercover alfresco and spacious backyard also allow more space for the kids to run around and play or entertain your guests. The kitchen is well appointed and has been equipped with quality stainless steel appliances, black stone benchtops, a four-burner gas cooktop and 600mm oven, tiled splashbacks, beautiful pendant lights, along plenty of storage space. The accommodation consists of four great-sized bedrooms, three of which with built-in robes and a potential fifth bedroom downstairs perfect for multigenerational families. The master bedroom also features a walk-in wardrobe and private ensuite. Features you will love:- Picturesque Backyard Oasis with plenty of space to entertain all of your loved ones- Ducted air conditioning throughout the home - Tiled flooring throughout the common area- Powder room downstairs- Designated study area- Rumpus room upstairs - Undercover alfresco area and spacious backyard- Single remote-controlled lock-up garage- Land size: 378 sqm Location Highlights:- 4 minutes drive to Tallawong Metro Station- 5 minutes drive to Schofields Train Station and Schofields Village- 12-minute walk to Schofields Public School- 9 minutes drive to Rouse Hill Town Centre- Short distance to daycare centres- Short distance to the local parks and more Disclaimer: All information contained herein is obtained from property owners or third-party sources which we believe are reliable. We have no reason to doubt its accuracy, however, we cannot guarantee it. All interested person/s should rely on their enquiries.