

69 Fairway Drive, Rowville, Vic 3178



House For Sale

Friday, 17 May 2024

69 Fairway Drive, Rowville, Vic 3178

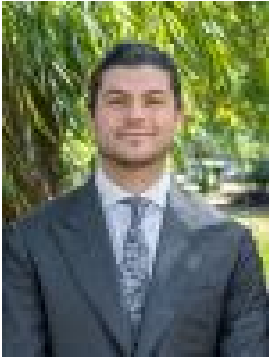
Bedrooms: 5

Bathrooms: 2

Parkings: 2

Area: 585 m2

Type: House



Rene Mawad
0403141596



Cat Schwind
0401011314

Auction (\$1,150,000 - \$1,250,000)

THE PROPERTY Underpinned by an enviable position amongst Rowville's renowned Sovereign Crest Estate resides this flexible five-bedroom family retreat designed to relax, entertain, and grow over the many years to come. Resort style gardens and a timeless brick veneer facade provide a timeless introduction to this double storey retreat's light abundant interiors. Flanking the formal entryway a light filled lounge provides a harmony of luxury and comfort with a double-sided gas log fireplace mirroring the neighbouring and commodious meals and family domain. Gourmets will relish the contemporary timber kitchen complete with pendant lighting, tiled splashbacks, a suite of stainless-steel appliances and breakfast bar seating allowing for a combination of formal and casual dining. A third living area and dedicated study zone assure ample space for every generation. Effortlessly retire to the first-floor master suite adorned with walk-in robe storage, sparkling en-suite bathroom and a lavish parent's retreat enhanced by alluring gas log fireplace and private garden balcony. Three further first floor bedrooms are accommodated by a sparkling main bathroom, whilst a ground floor fourth bedroom and powder room create an ideal configuration for guests. Ideal for year-round use, sliding doors reveal a palatial undercover alfresco warmed by a built-in fireplace and pizza oven creating a unified indoor and outdoor design.

THE FEATURES

- Double storey five-bedroom, two-bathroom family retreat
- Three generously designed living areas
- Modern kitchen, complete with pendant lighting, breakfast bar seating & SS appliances
- Huge master suite with WIR, ENS, parents retreat with fireplace and private balcony
- Three of the four further bedrooms offer accommodating built-in robe storage
- Family sized main bathroom features shower, bath, vanity and toilet
- Large laundry with linen press storage and door to under stairs storage
- Ground floor guest powder room
- Remote double car garage with internal and rear access
- Gas ducted heating, evaporative cooling, and split system air conditioning
- Ample storage inside and out
- Resort-style living with beautiful palm trees surrounding the property

THE LOCATION Beyond the home's extensive list of inclusions is an impressive lifestyle location located only a stone's throw away from Rowville Lakes Shopping Village, Mountain Gate Shopping Centre, Upper Ferntree Gully Station, Jubilee Drive Reserve, Karoo Primary School, Lysterfield Primary School, and St Joseph's College.

On Site Auction Thursday 6th of June at 6:30pm