

696 Barkly Street, West Footscray, Vic 3012

House For Sale

Wednesday, 15 May 2024



696 Barkly Street, West Footscray, Vic 3012

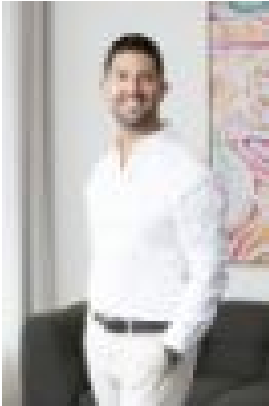
Bedrooms: 4

Bathrooms: 2

Parkings: 5

Area: 852 m2

Type: House



Joseph Luppino
0383987800



Huss Saad
0383987800

\$1,420,000 - \$1,550,000

Offering a huge north-facing allotment in a prime West Footscray lifestyle location, this property is set to ignite the imaginations of renovators, home builders, and developers with a bright vision for the future. The allotment currently holds two independent dwellings with superb renovation potential, while the freedom from heritage listing opens a world of possibilities for a new beginning. - 852sqm north-facing allotment with two independent dwellings offering move-in-ready living with scope for renovation/updates - the perfect site for a new home build (STCA), a multi-dwelling development (STCA), or a low-rise apartment complex (STCA) - the main residence offers three bedrooms with built-in robes, well-appointed kitchen/dining, formal living room, garden-view lounge, bathroom, and laundry - converted shop offers two bedrooms with built-in robes, living room, modern kitchen/meals, bathroom/laundry - huge back garden with covered alfresco entertaining and free-standing workshop - secure garage + ample driveway parking - superbly situated for lifestyle and convenience! Walk to Gaudion Reserve and its much-loved playground in just two minutes and stroll to Barkly Village to enjoy a coffee and bagel from Migrant Coffee, grab some takeaway from one the many eateries, and browse the shelves at The Chestnut Tree Bookshop. Central West Shopping Centre is a short stroll from home offering a great range of retailers and a choice of supermarkets, while the buzzing heart of Footscray awaits a seven-minute drive or an easy bus ride from home, tempting you with its renowned dining scene, great nightlife, and the convenience of Footscray Plaza and the Footscray Market - sought-after public school zone - walk to Footscray West Primary School in 12 minutes and catch the bus to Footscray High School's Barkly campus - only 9.3km from the CBD with regular city-bound trains from Tottenham Station, a short walk from home