

6A Maze Avenue, Ryde, NSW 2112

Sold Duplex/Semi-detached

Saturday, 25 November 2023

6A Maze Avenue, Ryde, NSW 2112

Bedrooms: 5

Bathrooms: 3

Parkings: 1

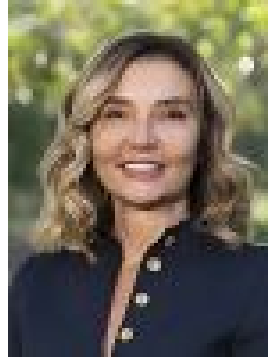
Area: 443 m²

Type:

Duplex/Semi-detached



Wayne Vaughan
0288765888



Teena Vaughan
0288765888

Contact agent

Showcasing an opulent aesthetic, this striking brand new duplex delivers impressive proportions, high-end finishes and magnificent flowing living zones with a centrepiece void. Its convenient cul-de-sac address is a walk to city buses and vibrant Top Ryde City.- Grand central living room illuminated by four void skylights- Vast open family and dining zones offer wide porcelain tiles- Level lawns and undercover terrace with five burner barbecue- Quantum Quartz gas kitchen has Smeg oven and butlers' pantry- Upper living area, beautiful bedrooms provide built-in robes- Opulent main bedroom has walk-in robe and ensuite with tub- Designer bathrooms feature black tapware and rain showers- Engineered timber floors upstairs, air conditioning and CCTV- LED strip lighting on façade, Biowood cladding on garage door- In heart of Ryde, stroll to Ryde Park and Ryde Public School