

**6C Wardlow Way, Balga, WA 6061**

**Sold Residential Land**

Wednesday, 18 October 2023



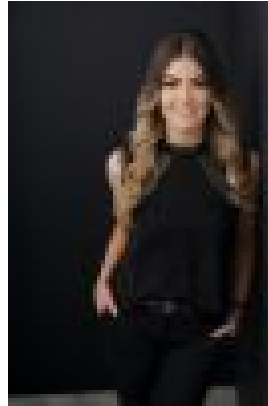
6C Wardlow Way, Balga, WA 6061

Area: 241 m2

Type: Residential Land



Debbie Newman  
0438381545



Sabrina Jade  
0451300897

**\$150,000**

Here in an opportunity for one lucky owner to secure a good sized private rear lot in a lovely convenient pocket of this suburb. Cleared & ready for you to get excited about building a lovely new home. Close to parks, schools & easy access to Reid Highway, shopping centres and bus stop. • Water rates: 1/7/22 - 30/4/23 \$516.44 (Approx) • City of Stirling rates: 22/23 \$1,021.00 (Approx P/A) Distance To: (Approx) • Balga Plaza: 1.4km • Stirling Leisure Centre - Leisurepark Balga: 1.6km • Princess Wallington Reserve: 1.4km • The Square Mirrabooka: 5.6km • Warwick Grove: 2.7km • Warwick Train Station: 3.9km Call Team Newman today for more information !!!