

**7/142-144 Picnic Point Road, Picnic Point, NSW
2213**



Townhouse For Sale

Thursday, 8 February 2024

7/142-144 Picnic Point Road, Picnic Point, NSW 2213

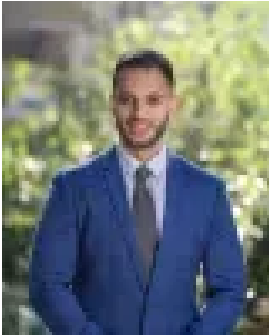
Bedrooms: 5

Bathrooms: 3

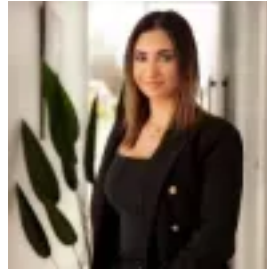
Parkings: 2

Area: 251 m2

Type: Townhouse



James Trivor
0297711177



Jennifer Challita
0297711177

Buyers Guide: \$1,200,000

Red Carpet Event | Wednesday, 6th March at The Revesby Workers Club (2B Brett St, Revesby) at 6:30pm. Registrations from 6:00pm. Quietly nestled in 'Riverside', a boutique community of just seven, this exceptional residence offers the discerning family a sanctuary of luxury, space and quality. Immaculately maintained and designed for effortless low maintenance living, this superb dual level home is second to none. With expansive entertaining and a protected barbecue terrace that flows to the landscaped gardens, all bedrooms are doubles with built-in robes. The main bedroom has a walk-in wardrobe and ensuite, while the sleek modern kitchen has stone benches and gas appliances. Additional features include polished timber and tiled floors, ducted air conditioning, ducted vacuuming, intercom, high ceilings and a double garage. Well placed just 500m to the waterfront Lambeth Reserve and Panania Public School, it is only 2km to Panania station and village conveniences. Features include:- Expansive living with a protected barbecue terrace- Sleek kitchen has stone benches and gas appliances- Double bedrooms with built-ins, main with an ensuite- Landscaped child-friendly garden with sunny level lawn- Double garage, ducted air conditioning, polished floors- Ducted vacuuming, high ceilings and security intercom- Well placed just 500m to the waterfront Lambeth Reserve- 500m to Panania Public, 2km to Panania station and village- Low maintenance luxury living in small block of seven

Disclaimer: All information contained herein is gathered from sources we believe reliable. We have no reason to doubt its accuracy, however we cannot guarantee it. All interested parties should make and rely upon their own enquiries.