

**7/2 Shoalhaven Drive, Woy Woy, NSW 2256**

**Sold Townhouse**

Wednesday, 6 March 2024

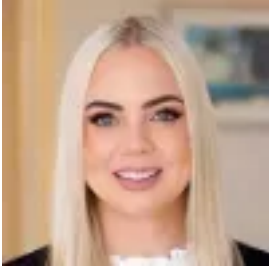
7/2 Shoalhaven Drive, Woy Woy, NSW 2256

**Bedrooms: 2**

**Bathrooms: 1**

**Parkings: 1**

**Type: Townhouse**



Kristy Thomson  
0243414555



Litsa Ward  
0402437442

**\$653,000**

MINUTES TO WOY WOY CBD & RAILWAY !Located in a very well-maintained complex within close proximity to Woy Woy CBD & Railway is this spacious and light filled townhouse with two bedrooms, one bathroom and one over sized single garage.Upstairs is the large air conditioned living area that flows out to the tiled balcony, perfect for entertaining. The separate dining area is off the original kitchen with access to the private courtyard with a stunning leafy outlook. Down the hall are two great sized bedrooms both with built in wardrobes and the large original bathroom with separate toilet. Downstairs is the over sized single lock up garage with internal access and a small work shop or study nook area. This over sized townhouse is perfect for the 1st home buyer !COUNCIL RATES: \$1,110.62 per annumWATER RATES: \$912.89 per annumSTRATA LEVIES: \$550.00 per quarterTOTAL FLOOR SPACE: 262SQMThis hidden gem will not last, Don't delay! Call Litsa Ward now to book your private inspection 0402 437 442.