

**7/216 President Avenue, Miranda, NSW 2228**



**Sold Townhouse**

Monday, 23 October 2023

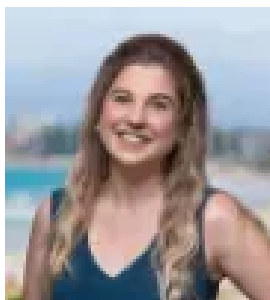
7/216 President Avenue, Miranda, NSW 2228

**Bedrooms: 4**

**Bathrooms: 3**

**Parkings: 2**

**Type: Townhouse**



Briolynn Kennedy  
0295239422

## Contact agent

Stunningly appointed and meticulously crafted by well-known interior designer Rochelle Halatau, this impressive brand new four bedroom residence offers ultimate luxury and low maintenance living. Showcasing exceptional workmanship, elegance and design, the property boasts opulent high-end finishes, a serene coastal colour palette, a cleverly designed family-centric layouts, and a seamless transition between indoor and outdoor entertainment spaces. Situated within a leisurely stroll of Westfield Miranda and close proximity to a diverse array of exceptional schools, scenic parks, cafes, restaurants, and convenient transportation options. Property Highlights:- Brand new, architecturally designed luxury residence in a small block of eight- Gorgeous coastal colour palette with timber flooring and carpet in all bedrooms- Designer chef's kitchen, 40mm stone benchtops, gas cooking & breakfast bar- Great sized light filled bedrooms all with built-ins, master including en-suite- Custom cabinetry with built in desk, air-conditioning, intercom & alarm- Covered alfresco entertaining, landscaped gardens & level grassed lawn- Double lock-up garage plus separately appointed lock-up storage cage - Convenient lift access in common area from the basement to ground level