

7/24 Wattle Road, Hawthorn, Vic 3122



Villa For Sale

Tuesday, 23 April 2024

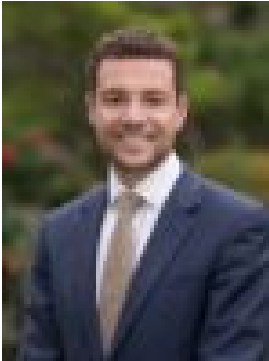
7/24 Wattle Road, Hawthorn, Vic 3122

Bedrooms: 2

Bathrooms: 1

Parkings: 1

Type: Villa



James Fitzpatrick
0398105000



Chris Hingston
0298105000

Contact Agent

Introducing a blend of security, space, and single-level living convenience, this villa residence nestled within a boutique block in Hawthorn offers stylishly renovated interiors and exclusive alfresco entertaining. Perfectly suited for first-time buyers, investors, downsizers, and young professionals, this property stands out with its prime location near Glenferrie Road trams, cafes, supermarkets, and entertainment options, Fairview Park and the scenic Yarra Trail, and a short walk to Hawthorn Station. Step inside to discover a truly welcoming atmosphere that immediately makes you feel at home. The open-plan living and dining area, saturated in natural light, seamlessly connects via bi-fold floor to ceiling windowed doors, to a private courtyard, creating an ideal space for outdoor gatherings and connected entertaining. A beautifully renovated kitchen features top-notch appliances, while two spacious bedrooms offer more lovely natural light, with the main bedroom boasting courtyard access and a walk in wardrobe. Modern comforts include a contemporary bathroom, split-system heating/cooling, and convenient carport parking. Freshly painted and with brand new COREtec Hybrid flooring, this beautiful property is ready to move in and enjoy. This residence presents a fantastic opportunity to enjoy the vibrant lifestyle of Hawthorn with ease and sophistication.