

7/30 Station Street, Schofields, NSW 2762

House For Sale

Friday, 27 October 2023

7/30 Station Street, Schofields, NSW 2762

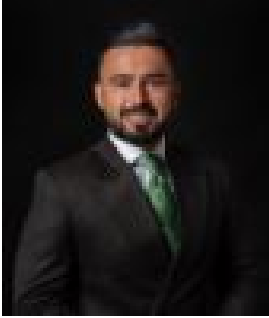
Bedrooms: 4

Bathrooms: 2

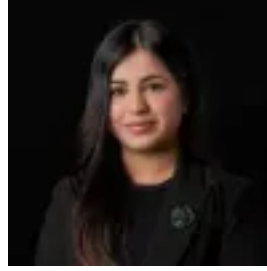
Parkings: 2

Area: 383 m2

Type: House



Amit Kumar
0288964336



Siya Sachdeva
0288964336

Price Guide \$880,000

Located in one of the vibrant pockets of Schofields, this stunning property offers the perfect blend of comfort and convenience, ready for you to move right in! Within a 1 minute's walk to Schofields Public School and short proximity to Schofields Train Station, Tallawong Metro Station, schools, parks and more this home has something the entire family will absolutely love. As you step inside, you will find yourself in a bright and welcoming interior that has been fully renovated with effortless flow from the entry through to the living areas. This versatile home offers an open-plan layout of the living, dining, and kitchen areas along with a formal lounge creating the perfect space for entertaining guests or simply relaxing with your loved ones. Natural light flows effortlessly between spaces and out to the outdoor entertaining area. The well-maintained kitchen features black stone benchtops, stainless steel appliances, oven, tiled splashbacks, and plenty of storage space. Accommodation consists of four great-sized bedrooms, with built-in robes. The master bedroom features a walk-in wardrobe with its own private ensuite and the fourth bedroom to cater to your every need from a cozy guest room to a productive home office or a playroom for your little ones. Features include:- Split system air conditioning- Combination of floorboards and tiled floorings- Bathtub to the main bathroom- Well-appointed kitchen- Double lock up garage with internal access- Total area: 383.3 sqm - Torrens Title home with no strata Location highlights:- 1 Minute walk to Schofields Public School and Park- 4 minutes drive and walking distance to Schofields Train Station and Schofields Shopping Village - 7 Minutes drive to Tallawong Metro Station- 10 minutes drive to Rouse Hill Town Centre- Schofields Park at your doorstep - Short distance to local cafes and Medical Centres Disclaimer: All information contained herein is obtained from property owners or third-party sources which we believe are reliable. We have no reason to doubt its accuracy, however, we cannot guarantee it. All interested person/s should rely on their own enquiries.