

7/31 Meadowvale Drive, Grovedale, Vic 3216



Unit For Sale

Tuesday, 7 May 2024

7/31 Meadowvale Drive, Grovedale, Vic 3216

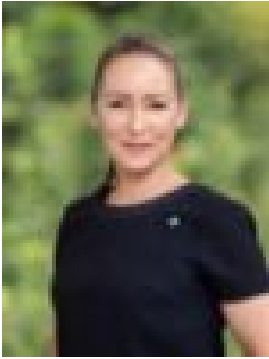
Bedrooms: 3

Bathrooms: 2

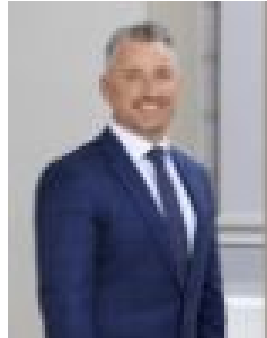
Parkings: 1

Area: 207 m2

Type: Unit



Rena Maniatakis Maniatakis
0423037828



Marcus Falconer
0417376025

\$530,000 - \$570,000

Have you been searching for low-maintenance living that feels just like home? Whether you're dreaming of breaking into the property market, searching for a superb downsizer, or hoping to grow your investment portfolio, this is the one for you. Convenience is the word for this townhouse just minutes from shops, schools, transport, and leisure facilities and on the doorstep of the Surf Coast. There's nothing left to do except move in and enjoy. Natural light sweeps through the open plan living/dining/kitchen zone, which creates a generous setting for everyday enjoyment. You'll love opening the sliding door onto the private outdoor area. The kitchen features stone bench tops, breakfast bar, dishwasher, oven and cook top. The main bedroom boasts an ensuite and walk-in robe, while the two remaining bedrooms have built-in robes and share a central bathroom with a full-size bath and shower, along with separate toilet. Located at the back, light-filled unit in a block of 16. Other features of the property include ducted heating, split-system air conditioning in the living area and low-maintenance garden. Waurm Ponds Shopping Centre and the Leisurelink swimming pool and gym are less than five minutes' drive away, while the Ring Road is even closer for commuters to Melbourne. Deakin University, Epworth hospital, Waurm Ponds and Marshall railway stations, primary schools, and Grovedale College secondary school are all within close proximity too. In summer, enjoy the Surf Coast lifestyle, with the sun, surf and sand of Torquay and Bells Beach around 20 minutes away.