

7/41-43 Lachlan Street, Warwick Farm, NSW 2170

CENTURY 21

Sold Unit

Friday, 13 October 2023

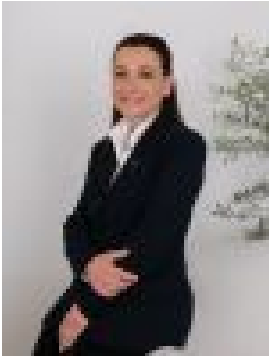
7/41-43 Lachlan Street, Warwick Farm, NSW 2170

Bedrooms: 2

Bathrooms: 2

Parkings: 1

Type: Unit



Sonia Poulos
0296015944

\$435,000

A very well presented apartment situated on level 1 of a very popular complex with walk everywhere convenience and an innovative floor plan that provides features rarely achievable in the price range. Presents as an ideal entry level investment opportunity.- 2 bedrooms with built in robes- Main bedroom with ensuite- Open plan living with SS Air conditioning- Modern gas kitchen with stone benchtops- Internal laundry- North facing balcony- Secure basement car space- Currently returning \$425.00p.w- Leased till April 2024OUTGOINGS: Strata Levies \$772.55p.q, Council Rates \$322.00p.q, Water Rates \$174.00p.q NB: PHOTOS TAKEN PRE TENANCYDISCLAIMER: While Century21 Combined Liverpool has made every effort in preparing this information and used their best endeavours to ensure that the information contained is true and accurate, we accept no responsibility and disclaim all liability in respect of any errors, inaccuracies or misstatements contained herein. Century21 Combined Liverpool encourages and advises all prospective purchasers to make their own inquiries in order to verify the information contained herein.