

7/67 Wattle Valley Road, Canterbury, Vic 3126

Sold Apartment

Tuesday, 26 September 2023



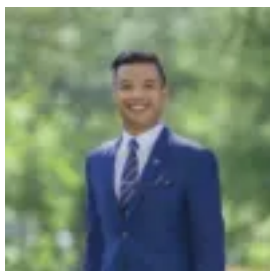
7/67 Wattle Valley Road, Canterbury, Vic 3126

Bedrooms: 2

Bathrooms: 1

Parkings: 1

Type: Apartment



Khom Falla

0398105000

Contact agent

Totally renovated spacious ground floor apartment offering wide entrance foyer, large lounge with north facing windows, two spacious bedrooms both with built-in robes, excellent kitchen with a family sized meals area, bathroom that includes large shower, laundry, separate toilet. Includes: Gas heating, gas cooking,, excellent storage, carport and delightful outdoor area set amongst immaculate grounds. Walk to Middle Camberwell shops, Riversdale Road tram, Maling Road, Canterbury Station, some of Melbourne 's finest schools and more.