

7 Belle Circuit, Berwick, Vic 3806

Sold House

Monday, 18 March 2024

7 Belle Circuit, Berwick, Vic 3806

Bedrooms: 4

Bathrooms: 2

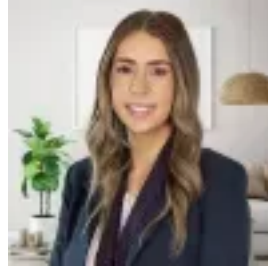
Parkings: 2

Area: 513 m2

Type: House



Hayley Taufa
0397071400



Jess Hall
0397071400

\$1,000,000

Welcome to 7 Belle Circuit, Berwick – a truly exceptional family home designed for both comfort and style. As you step inside, you are greeted by a light-filled front living area, setting the tone for the elegance that awaits throughout. The master bedroom is a luxurious retreat, boasting a spacious layout complemented by a double walk-in robe and a well-appointed ensuite, offering a private sanctuary for relaxation. The remaining three bedrooms are generously sized and feature built-in robes, providing ample storage space for the whole family. The heart of the home is the expansive open-plan living, dining, and kitchen area, where modern design meets functionality. The kitchen is a chef's delight, equipped with high-quality appliances, ample cabinetry, and a convenient walk-in pantry. Overlooking the living area, the kitchen ensures seamless interaction with family and guests, making entertaining a breeze. A highlight of the home is the inviting alfresco area, seamlessly extending the living space outdoors. Here, you'll find a spacious entertainment area complete with a rejuvenating spa – the perfect spot to unwind after a long day. The low-maintenance garden surrounding the alfresco area adds a touch of greenery and tranquility to the outdoor space. Practical features such as ample storage options, including a double garage, ensure that daily living is both convenient and organized. Ducted heating and evaporative cooling throughout the home provide year-round comfort, while enhancing energy efficiency. Located in the sought-after area of Berwick, this beautiful family home offers the perfect combination of luxury, functionality, and convenience. Don't miss your chance to make 7 Belle Circuit your own – schedule a viewing today and experience the epitome of modern family living. This property is in the most convenient pocket of Berwick surrounded by quality schools, proximity is as follow: -Chase Primary School 450metres -St Francis Xavier 1.7km -St Catherine's Primary 1.7km -Brentwood Primary 2.5km -Kambrya Secondary 2.6km -Beaconhills College 3.7km -Rivercrest Christian College 3.9km -Hailebury 5km Conveniently positioned, with schools, parks, shops and transport right on your doorstep. This is one to inspect.