

**7 Buni Street, Holmesville, NSW 2286**



**House For Rent**

Friday, 3 May 2024

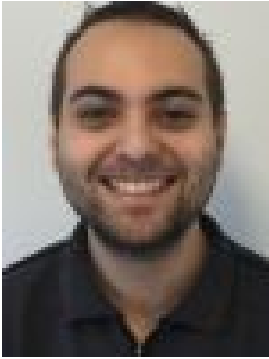
**7 Buni Street, Holmesville, NSW 2286**

**Bedrooms: 3**

**Bathrooms: 1**

**Parkings: 2**

**Type: House**



Christopher Morgan  
1300002775

**\$700 per week**

Spacious Charming Home With Sweeping Views This beautiful property is located in an elevated position in Holmesville, offering sweeping district and mountain views across to the Sugarloaf Range. Just 5 minutes to both the M1 and Newcastle Link Road and only 10 minutes drive to Stockland Glendale, the location offers fantastic convenience without sacrificing character. Features of this wonderful property include: - Three generously sized bedrooms, each including ceiling fans - Master and second bedroom offer built-in robes - 2nd Living Area with potential to be a forth bedroom or home office - Kitchen complete with gas cooktop and electric oven, Miele dishwasher and ample storage - Stylish bathroom including skylight window, luxurious freestanding bath and separate shower - Expansive living / dining space including air conditioning, gas point and access to the rear deck - Extensive wrap-around deck complete with roller blinds provides seasonal comfort while presenting beautiful views of Mt Sugarloaf, perfect for sunsets or year-round entertaining - Solar hot water and solar electricity offer savings on energy bills - LED downlights throughout - Spacious, hedge-lined yard offering privacy and plenty of room for a growing family - Double garage and ample off-street parking offering plenty of room for several vehicles With so much on offer, this property is sure to impress. Join us at any scheduled open inspection or contact us to arrange a viewing. PETS MAY BE CONSIDERED UPON APPLICATION\*\* OUR OFFICE DOES NOT ACCEPT IGNITE/1FORM APPLICATIONS - PLEASE VISIT THE FOLLOWING LINK TO APPLY  
\*\*<https://www.2apply.com.au/agency?n=Apple>