

7 Cinder Drive, Tarneit, Vic 3029

THE ELEET

House For Sale

Tuesday, 4 June 2024

7 Cinder Drive, Tarneit, Vic 3029

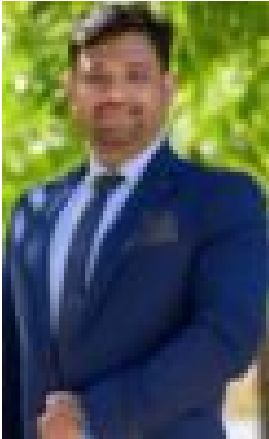
Bedrooms: 4

Bathrooms: 2

Parkings: 2

Area: 350 m2

Type: House



Ali Hashmi
0430109786



Sachin Kherra
0433110100

Contact Ali Hashmi !!

7 CINDER DRIVE TARNEIT VIC 3029 ALI Hashmi & The Eleet Wyndham City proudly presents to you this immaculately located Family home. Nestled in the prestigious Grove Estate, this residence is a showcase of modern design and thoughtful functionality. The moment you step inside, you'll be greeted by a sense of space and elegance. The well-appointed kitchen, a hub of culinary inspiration, seamlessly connects with the open-plan living area - the perfect space for family gatherings and entertaining friends. Less than a 1km walk to Riverdale Shopping Centre and public transport at your door step, in a central location close to Sayers Road leading you only 30 km away from Melbourne CBD, medical centers, walking distances to schools, quality built, this highly desirable location home is a must inspect in the Grove Estate close to all amenities and walking distance to Brinbeal Collage, Karwan Primary School, Dianella Community Center. Future play ground and shopping center with branded stores coming up on corner of Bethany and Davies road will be more convenient for local residence. It's not your standard home, but its abundant accommodation, flexible two living and contemporary spaces make this elevated residence a unique opportunity not to be missed. Located 30 km from the CBD, offers everything what the modern family requires including great location and active lifestyle. Key Features - # Master with Ensuite & WIR's # 3 Bedrooms w/ BIR'S # Remote Controlled # Ducted Heating & Cooling Evaporative # 900 mm Stainless Steel Appliances. # Walk in pantry # Stone Bench-top # Landscaping done in Back & Front with zero Maintenance. # Letter box. # Dedicated living area including a separate Formal Lounge and Open plan Living area # Hybrid Flooring to entry, kitchen, meal family area. Located in the highly sought-after Grove estate, this property is accessible to Davis Creek Primary School, Icom school, Grand Masjid Of Melbourne, and Sporting Ground, Bus stops, Tarneit West train Station and Riverdale Shopping Centres, multiple parklands. ALI HASHMI welcome you and looking forward to meet you at the open homes. For further queries or request for inspections call Ali on 0430 109 786. (Photo ID is required upon inspection) DISCLAIMER: All stated dimensions are approximate only. Particulars given are for general information only and do not constitute any representation on the part of the vendor or agent. Please see the below link for an up-to-date copy of the Due Diligence Check List: <http://www.consumer.vic.gov.au/duediligencechecklis> Read less