

# 7 Cotswold Court, Grovedale, Vic 3216

## House For Sale

Thursday, 11 April 2024



7 Cotswold Court, Grovedale, Vic 3216

**Bedrooms: 3**

**Bathrooms: 2**

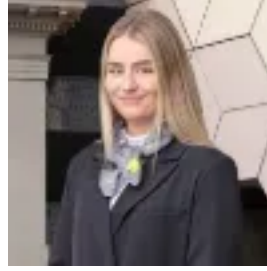
**Parkings: 2**

**Area: 693 m2**

**Type: House**



George Politis  
0352411331



Mollie Chandler  
0475843029

**\$629,000 - \$679,000**

Nestled in a serene and sought-after neighbourhood presenting a fantastic opportunity to own a meticulously updated home that combines modern living with unparalleled convenience. This turn-key residence offers quality finishes, and a lifestyle of comfort and convenience. As you step inside, you are greeted by a warm and inviting atmosphere, accentuated by natural light highlighting the updated interiors. The home boasts three spacious bedrooms, each outfitted with built-in robes, offering ample storage and organization solutions. The master suite elevates the notion of a private retreat with its elegant ensuite, creating a tranquil space to unwind along with a bay window seating areas. The generous main bathroom caters effortlessly to both family members and guests, ensuring convenience and privacy. Central to the home's design is the kitchen, a masterpiece of functionality and style. Equipped with a gas cooktop, electric oven, dishwasher, and breakfast bar area, it stands as the heart of the home. Surrounding the kitchen, diverse living areas and a dedicated dining space offer flexibility and fluidity in daily living and entertaining. Transition seamlessly to the outdoors where the expansive alfresco area awaits, complete with a bar area, BBQ bench with an exhaust fan, and a cozy wood log heater, setting the stage for memorable gatherings and serene moments alike. With the inclusion of a double car garage, central heating, split system cooling, and fans, every aspect of comfort has been considered and catered to. The property's prime location ensures that lifestyle and convenience converge, offering proximity to Waurin Ponds shopping and Leisurelink Aquatic Centre. Families will find themselves at the heart of community living, with exceptional schools and daycare centres just moments away. Leisure and exploration are never far, with the Geelong Waterfront and the sandy shores of Torquay within easy reach. Offering an entryway to a lifestyle abundant in happiness, ease, and everyday convenience. Seize this unique chance to claim not merely a house, but a way of life desired by many yet possessed by few.