

7 Cranleigh Place, Craigieburn, Vic 3064



Sold House

Thursday, 22 February 2024

7 Cranleigh Place, Craigieburn, Vic 3064

Bedrooms: 3

Bathrooms: 1

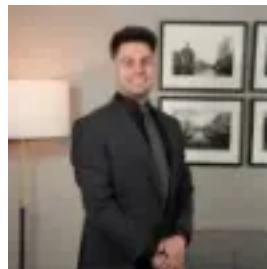
Parkings: 4

Area: 677 m2

Type: House



Domenic Malgeri
0426361392



Giorgio Mavrelis
0402914472

\$575,000

A thoughtfully renovated sanctuary nestled in the heart of Craigieburn. This original family home has been recently updated, featuring new flooring and freshly painted interiors. Every detail has been carefully considered to ensure a seamless blend of classic charm and modern comfort, offering the perfect opportunity to create cherished memories in a home that effortlessly combines character with room to grow in the future. This amazing property will suit first home buyer and investors alike. As you step inside, you'll be greeted by a warm and inviting atmosphere. The floor plan connects the living, dining, and kitchen areas, creating a perfect space for entertaining guests or spending quality time with family. Split-system air conditioning, new wall heaters and quality fixtures and fittings ensure year-round comfort. This home boasts a contemporary design that maximizes natural light and space. One of the standout features of this property is the Garage/workshop. With room for more than three cars, you'll have plenty of space for vehicles, storage and a large workshop. Convenient Connectivity: * A choice of bus routes around the corner. * Proximity to Craigieburn Station and Craigieburn Plaza. * Close to the open spaces of Craigieburn Gardens. * Easy access to a range of public schools and popular kinder/day care facilities. * Conveniently located near the Hume Freeway. Proximity to Craigieburn Public Golf Course: Enjoy the renowned Craigieburn Public Golf Course just a stone's throw away, offering a perfect escape for golf enthusiasts and those seeking leisure in a picturesque setting. Versatile Investment Opportunity: * Set on a wonderfully deep block of land (approx. 677 sq m approx.). * A great opportunity presents itself to the market in a suburb set for a future of growth. * Perfect starter pack for first home buyers keen to get into the market. * A smart addition to an investment portfolio with endless opportunities to develop the site (STCA) Terms: 10% deposit, balance 60/90 days