

7 Doodson Avenue, Lidcombe, NSW 2141

Block Of Units For Sale

Tuesday, 9 April 2024



7 Doodson Avenue, Lidcombe, NSW 2141

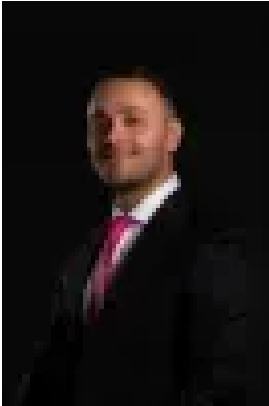
Bedrooms: 24

Bathrooms: 12

Parkings: 12

Area: 1268 m2

Type: Block Of Units



Elie Semrani
0297632277



Adrian Jian-Sheng Wu
0297632277

AUCTION ON SITE THIS SATURDAY

Strathfield Partners are pleased to offer 7 Doodson Avenue, Lidcombe to the market for sale via Auction. This offering represents an exciting opportunity for developers or investors to acquire a prime parcel of land with twelve (12) units in the heart of Lidcombe. The property consists of: - 12 x 2-bedroom units - 12 x Carspaces - All units have 1-bathroom, internal laundry and balconies - Site area 1,268m² Approx. - FSR 2.2:1 - Height of Building: 29m - Zoned R4: High Density Residential. The property is fully leased and recently refurbished with solid brick construction. Positioned within a convenient 5-minute stroll (500m) from Lidcombe Train Station, this location offers easy access to a plethora of amenities. Schools like Lidcombe Public School, St Joachim's Primary School, and the Korean Language School, along with University of Sydney's Cumberland Campus and TAFE NSW, are all within walking distance. With seamless connectivity to major transport routes such as the M4, residents enjoy proximity to Lidcombe Shopping Center, Costco, Flemington Markets, and Olympic Park, the location benefits from significant value adding proposition through re-negotiations of rents, and/or future redevelopment upside (STCA). Disclaimer: We have in preparing this document, used our best endeavours to ensure that all the information contained in this document is true and accurate, but accept no responsibility and disclaim all liability in respect of any errors, omissions, inaccuracies or misstatements contained in this document.