

7 Dotterel Court, Chelsea Heights, Vic 3196



Sold House

Saturday, 30 March 2024

7 Dotterel Court, Chelsea Heights, Vic 3196

Bedrooms: 3

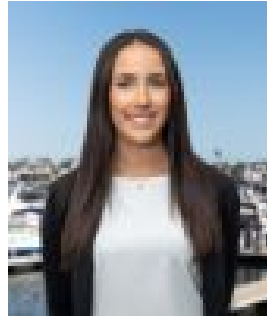
Bathrooms: 2

Parkings: 1

Type: House



Genevieve Hill
0397721088



Emily Hill
0491743110

Contact agent

In a low traffic cul-de-sac that enjoys fabulous proximity to an array of amenities, this well-maintained single-level home presents a perfectly low maintenance opportunity for young families or investors to get into a popular neighbourhood. Offering comfortable and very practical accommodation, the home opens to an inviting lounge with quality parquet floors, a cosy gas fireplace and pretty bay window looking out to the front garden - this space is desirably open plan to the dining zone and bright kitchen. Out from here, a side yard wraps around to the multi-seasonal sheltered patio that offers a generous space for alfresco entertaining and also give handy gated access out to Edithvale Road perfect for jumping on the bus. The front master bedroom benefits from a walk-in wardrobe and ensuite bathroom, while tucked together at the rear along with the main bathroom are two further bedrooms (BIRs) effectively creating an ideal kids' zone. A laundry with access to the patio, generous linen cupboard and split system heating/cooling plus an auto garage wrap up a welcoming opportunity. A perfect foundation on which to add your own style and modern enhancements, this conveniently positioned property is a walk to eateries & retail options, close to the freeway and schooling and also a quick trip to Edithvale beach & station.