

# 7 Emanuel Drive, Farley, NSW 2320

## Sold Residential Land

Wednesday, 20 September 2023

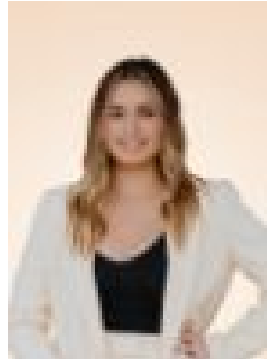
7 Emanuel Drive, Farley, NSW 2320

Area: 824 m2

Type: Residential Land



Nick Clarke  
0240043200



Courtney Lantry  
0240043200

**\$375,000**

If you've been looking for a sign to jump into the market, this is it! An amazing opportunity has just emerged, with a fantastic block of land available for purchase in The Ridge Estate Farley. Nestled in the highly sought-after The Ridge Estate Farley, is this spacious 824 sqm parcel of land. This lovely Estate is home to nearby leisurely walking trails, sporting fields, dog parks, daycare, a driving range & only a short drive to the Hunter Valleys beautiful wineries. Also only minutes away are 3 major supermarkets, schools, bowling clubs, restaurants, train stations, the local homemakers centre and more - what more could you possibly need? Build your dream family home in this quiet street or start your next development project right here in Farley - the choice is yours! Features: - Cleared 824 sqm- Registered and ready to build- All services to the block: Power, water, and sewer- ZONING: R1 General Residential- Not flood or bushfire - Dimensions: Approx. 32m Deep x 26m Wide\*\*\*Health & Safety Measures are in Place for Open Homes & All Private InspectionsDisclaimer:All information contained herein is gathered from sources we deem reliable. However, we cannot guarantee its accuracy and act as a messenger only in passing on the details. Interested parties should rely on their own enquiries. Some of our properties are marketed from time to time without price guide at the vendors request. This website may have filtered the property into a price bracket for website functionality purposes. Any personal information given to us during the course of the campaign will be kept on our database for follow up and to market other services and opportunities unless instructed in writing.