

7 Green Gully Road, Clyde, Vic 3978



House For Sale

Saturday, 24 February 2024

7 Green Gully Road, Clyde, Vic 3978

Bedrooms: 4

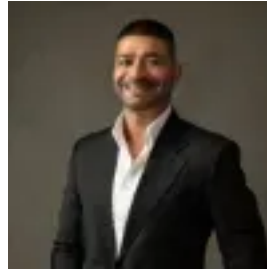
Bathrooms: 2

Parkings: 2

Type: House



Gary Singh
0359913888



Sanjay Singh
0359913888

\$740,000-\$790,000

Clyde, Pasadena ESTATE: Explore contemporary living at its finest in Clyde's Pasadena Estate with this exceptional new residential property. This home exudes style, functionality, and convenience, offering a top-notch living experience in a vibrant and desirable location. Step inside to discover the ultimate in modern luxury. Featuring four bedrooms, including a luxurious master suite, this home showcases sophistication. The master bedroom is a tranquil retreat with a lavish ensuite exuding luxury, complemented by spacious walk-in robes and vanities. The additional bedrooms come with built-in robes, providing ample storage and comfort for all residents. The heart of the home boasts a functional family dining area seamlessly connected to a versatile rumpus room, perfect for leisure and entertainment. The impressive kitchen serves as the focal point, featuring beautiful stone benchtops and a spacious bench for extra workspace. The adjacent pantry offers added storage and convenience, making cooking a joy. Gas cooking, a dishwasher, and high-end appliances enhance the kitchen's appeal. Sliding doors lead to a charming alfresco sitting area surrounded by a low-maintenance garden, creating a space for year-round relaxation and enjoyment. The inclusion of carpets in the bedrooms and rumpus area adds a cozy and inviting atmosphere throughout the home. Safety is a priority, with an integrated alarm system providing additional security for peace of mind. Practicality meets design with a dedicated laundry area and three linen cupboards, emphasizing functionality and organization within the home.-4 Bedrooms-Master with Full Ensuite- Walk in Robe-Built in Robes-Family Dining Area-Open Plan Kitchen-Stone Benchtops-Pantry-Top Quality appliances-Rumpus Room-Alfresco Area-Low-Maintenance Garden-Carpet in Bedrooms and Rumpus Areas-Alarm System-Laundry-Linen CupboardsHeating: YesCooling: YesDishwasher: YesDownlights: Yes-Chattels: All Fittings and Fixtures as Inspected as Permanent Nature-Deposit Terms: 10% of Purchase Price-Preferred Settlement: 30/45/60 DaysThis residence's prime location is a standout feature, positioned conveniently, close to all the amenities:-Shopping on Clyde Complex-Pasadena Fenced Dog Park-Eliston district Park playground-Medical Facilities-Daycares and Childcare Centers-Primary and Secondary SchoolsIn essence, this young residential gem in Clyde's Pavilion estate epitomizes luxurious living in a dynamic community, offering an unmatched combination of comfort, style, and convenience for discerning homeowners. Properties like this sell in a blink of an eye. Call GARY SINGH today and book a viewing.PHOTO ID REQUIRED AT OPEN HOMES.Every care has been taken to verify the accuracy of the details in this advertisement; however, we cannot guarantee their correctness. Prospective purchasers are requested to take such action as is necessary to satisfy themselves about any pertinent matter.