

7 Lexington Parade, Adamstown Heights, NSW 2289

We are
Chapman Property.

House For Sale

Wednesday, 22 November 2023

7 Lexington Parade, Adamstown Heights, NSW 2289

Bedrooms: 4

Bathrooms: 1

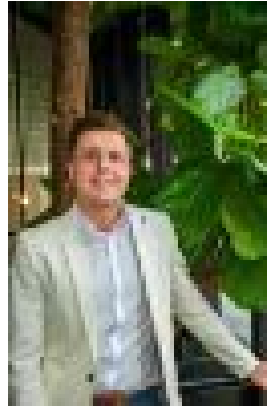
Parkings: 1

Area: 689 m2

Type: House



Sam Kolatchew
0423074065



Colin Chapman

Contact Agent

Located on the high side of an elevated 689 sqm corner block, this four-bedroom family home enjoys spectacular city views over the treetops. With major shopping centres within moments and schools within walking distance, you will have more time to enjoy nearby iconic beaches and the surrounding parks and sports facilities. - The red brick fence matches the red brick porch, red brick single lockup garage and red roofing tiles that frame this attractive weatherboard home. - Large north-east facing windows provide a welcoming front façade, capturing winter sunlight during the morning and daytime. - The wraparound gardens are cleverly landscaped with paving, stone retaining walls, rockeries and planter boxes, creating beauty with minimal maintenance. - A generous tiled entrance lobby leads into a magnificent open living and dining area with rich polished timber flooring, masonry fireplace, wide cornices, ceiling fan and French doors that open onto the front porch, offering a spectacular vista. - The substantial white kitchen features paneled cabinetry, a pantry, stunning leadlight overhead units, gas cooking, dishwasher and a double sink with view over the backyard. - All four bedrooms benefit from timber flooring and windows with views, two with ceiling fan and mirrored built-in robes. The fourth bedroom could alternatively be used as a study with external door onto the patio. - The bathroom has a period pink bath with matching tiling and hob-less shower. - A rear verandah flows out to a raised paved terrace set under a huge shade tree, the perfect location for family barbecues. - Further highlights include: Bright laundry with outdoor access; linen closet; freshly painted throughout with modern neutral tones; rear ramp to side gate

The Location - Westfield with Coles and Woolies (just 1.3 km); Homemaker Centre, Kotara (1.7 km); and the massive Charlestown Square and Hoyts (only 2.9 km) - Zoned for Belair Public School (a 500m walk) and Kotara High School (a 450m walk), with a number of other good schools within 9 km - Three parks with playgrounds (6-min walk); Gym (1.3 km); climbing (2.1 km); Tennis Courts (3.2 km); Bowling Club (3.3 km); Merewether Golf Club (3.4 km) - Walk or ride your bike along the popular 16 km Fernleigh Track (500m) - Merewether and Dudley Beaches nearby; Glenrock State Conservation Area for scenic bush walks, including lookouts, lagoon and waterfalls (1 km) - Newcastle CBD (only 8.2 km); Train Station (2