

7 Mel Avenue, Blackheath, NSW 2785



Sold House

Wednesday, 27 March 2024

7 Mel Avenue, Blackheath, NSW 2785

Bedrooms: 3

Bathrooms: 1

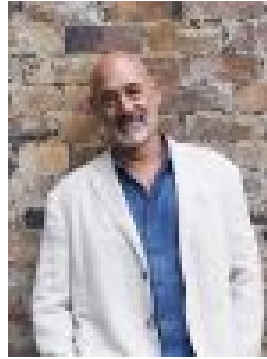
Parkings: 1

Area: 664 m2

Type: House



Adele Colman
0414876211



Lewis Thyer
0430043806

\$1,290,100

Sometimes a home comes to market that has a great energy, a sense of place, a feeling of being grounded. 7 Mel Avenue is such a place. Circa 1920's, the original weatherboard cottage has all the expected cues - the lovely casement windows, the ornate ceilings and wide floorboards, wainscoting and dado rails. Purchased as a retirement home for the renowned national treasure, Peter Rushforth who was known for his earthy wood fired stoneware ceramics the home was sympathetically renovated in a distinct and restrained style that respects the original form. Upon arrival the first hint of this renovation is the rakish carport that leads you to the front veranda and a small but delicious front garden with a magnificent ancient and twisted cherry tree. Enter to find the classic hallway with two well proportioned bedrooms running off each side. As they are both corner rooms they each have two sets of casement windows making them feel light and airy and the main bedroom even has its own little loo room! Moving further through, the renovations become more evident as the house opens into a large kitchen/living and dining area. The overwhelming feeling here is of restraint - beautiful timbers, a gorgeous set of north facing period correct windows in the kitchen that flood the room with winter sun, bespoke timber cabinetry with perforated zinc inserts and the floors have been faithfully matched to the originals. Did I mention that there is a slow combustion fire in the kitchen too? How good would this be in winter with a slow cooking concoction simmering away filling this bespoke home with delicious aromas! The bathroom, again a large room, clad in tiles and beautiful timbers, very elegant with a separate shower and a lovely deep bath. Detail abounds, sweet sliding shutters for privacy, a laundry nook, timber bench-tops and again, restrained and elegant. Tucked into the back left corner of the house is the third bedroom, a large room with timber sliding doors that open directly to the rear deck - this may be your pick, to wake up overlooking that wall of green would be close to sublime. The living/dining opens to the gardens with a wide and deep deck and clever use of local sandstone blocks to create 'seats' around the fire-pit. The gardens, designed by renowned landscape architect Craig Burton, feel much larger than they are - this clever effect is called a 'borrowed view' as the neighbouring properties all have significant trees so you are looking out over a restful sea of green. Nestled into this wonderful space is a studio, complete with a pot belly stove and it's own sunny yet covered area at the front - what a wonderful creative space this could be, warm as toast on a chilly winter day, creating the art of your choice or on a more practical note it would make a terrific work from home office. Attached to the studio is a garden shed that is so rustic and pretty, it just blends into the garden perfectly! So, you really have to come have a look, words and photos do not do this gem justice, come along and just be. •❏Ducted Gas Central Heating•❏Instantaneous Gas Hot Water•❏Gas Cooking•❏Manageable 664M2 Garden Block