

7 Milman Drive, Port Douglas, Qld 4877



House For Sale

Tuesday, 7 May 2024

7 Milman Drive, Port Douglas, Qld 4877

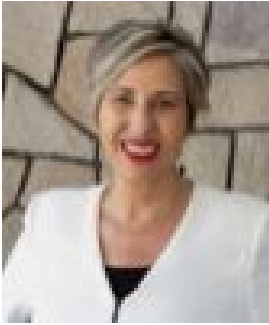
Bedrooms: 3

Bathrooms: 2

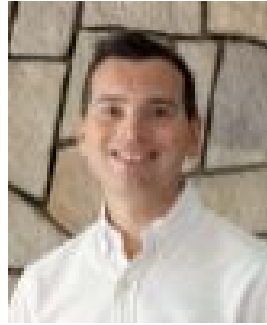
Parkings: 2

Area: 630 m2

Type: House



Soula Kazakis
0740982507



Lee Tartaglia
0499043311

Offers Over \$810,000

Welcome home! This low maintenance modern abode is a cosy sanctuary for first-time buyers, retirees, or young families seeking comfort and convenience. With no rear neighbours, and a rainforest backdrop this home offers peace and privacy, allowing you to truly embrace the serenity of your surroundings. Step inside to a light and bright home with an extra wide hallway which not only adds to the sense of space and openness but also facilitates excellent cross ventilation, allowing fresh air to flow freely throughout your property. Complete with all the essentials for modern living this home is fully air conditioned and screened. At the front of the residence, the primary bedroom features a walk in robe and ensuite. Both guest bedrooms have built in robes and are generous in proportions. The heart of this home is the inviting open-plan living, dining, and kitchen area which seamlessly opens to the outdoors and enjoys a lush green aspect. This space is designed for socialising and entertaining, with an island bench perfect for informal gatherings. The well designed kitchen layout with walk-in pantry ensures ample storage, keeping your kitchen clutter-free and organised. But the perks don't stop there. The outdoor area is a true oasis, complete with ample undercover space for relaxed lounging, enjoying a meal, cooling off in the sparkling pool and connecting with nature. Whether you're hosting a BBQ with friends or simply lounging in the sun, this inviting low maintenance back garden is sure to become your favourite retreat. This home is turnkey ready, fully fenced, and secure. The gated side access to the back garden offers the added convenience and versatility to accommodate a boat, trailer or small caravan. With clever design and a conscious, deliberate use of space this home truly offers the complete package. Don't miss your chance to make it yours! For more information or to arrange a private inspection please contact Soula Kazakis on 0422 966 573 or Lee Tartaglia on 0499 043 311. At A Glance: • 630sqm Allotment • Cosy Open Plan • Rainforest Backdrop • No Rear Neighbour • Low Maintenance Garden • Close to Palmers Sea Reef Golf Course