

7 New York Way, Spring Mountain, Qld 4300

House For Sale

Monday, 22 April 2024



7 New York Way, Spring Mountain, Qld 4300

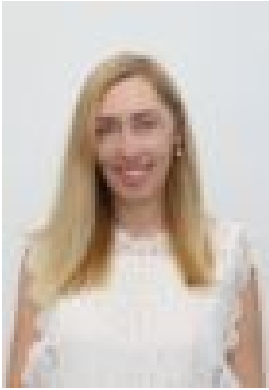
Bedrooms: 4

Bathrooms: 3

Parkings: 2

Area: 503 m2

Type: House



Alyson Eady
0733720400



Mark Foelz
0432521724

Offers over \$959,000

Offering a stately presence, positioned on an elevated corner block surrounded by other quality ex display homes. The layout, with four bedrooms and three bathrooms, including two ensuites, is ideal for multigenerational living or accommodating guests. The central hub upstairs comprises of the kitchen, living and dining areas, along with the entertainer's timber deck, seems perfectly designed for both comfort and social gatherings. Its orientation takes full advantage of the north | north-east breezes and the elevated aspect, ensuring a pleasant ambiance. Perfectly located within close proximity to Orion Shopping & Lagoon, Tafe Qld & USQ Campus, private & state schools and Mater Private Hospital. The iconic Silver Jubilee Park is on your doorstep offering vast recreational space for sports and play, adds immensely to the appeal. Other Desirable Features: Ex display home quality Ducted air conditioning with smart controls Security alarm system Solar panels Galley style kitchen with island bench, catering perfectly to modern family needs Open plan kitchen, living design with seamless flow to rear entertainers deck Master bedroom with private balcony, ensuite and walk-in robe Stylish fixtures and fittings elevate the home's overall appeal Pendant lighting & soffit downlights enhance the home's charm after dark Stacker doors leading to the timber deck Power and ceiling fan to outdoor deck North/North-East aspect Ample backyard with enough room for kids playground and family pet Galley-style kitchen with an island bench, catering perfectly to modern family needs Living at No. 7 New York Way, Spring Mountain, promises not just a beautiful home but a fulfilling lifestyle, blending comfort, convenience, and community spirit seamlessly.