

7 Parkview Road, Glass House Mountains, Qld 4518



House For Sale

Tuesday, 7 May 2024

7 Parkview Road, Glass House Mountains, Qld 4518

Bedrooms: 5

Bathrooms: 2

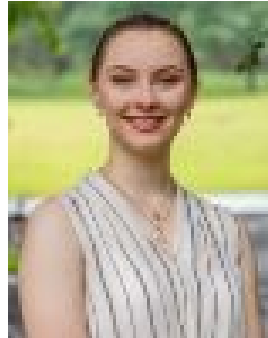
Parkings: 8

Area: 2102 m2

Type: House



Donnie Plant
0435825942



Briony Spencer
0754390300

Contact Agent

Donnie Plant, Briony Spencer and the team at Ray White Landsborough are thrilled to introduce 7 Parkview Road, Glass House Mountains to the local market! Step into luxurious living in a home nestled amongst the picturesque Glasshouse Mountains. This beautiful home brings fresh comfort to a peaceful street. Offering 5 generously sized bedrooms, bright open-plan living areas, and a huge covered outdoor entertaining area, this home is an entertainer's dream! With double gated side access on the left and right of this home, you'll be able to access the beautifully landscaped backyard with ease. Here, you'll also find a fully fenced, in-ground concrete saltwater pool, as well as a tall 3 bay 12m x 9m shed for all your toys and joys! The property is situated only a short distance to the IGA, Australia Zoo, Aussie World, hairdressers, butchers, restaurants, the local pub, children's playgrounds, dog parks, private and public-school bus routes, and has direct access to the highway so that you can head to the best beaches Sunshine Coast has to offer or to Brisbane city for a day out of shopping. Features of this home include:

- Master bedroom with walk-in wardrobe and ensuite with spa bath and shower with both rain and detachable shower heads
- 3 additional bedrooms with built-in wardrobes
- Office / 5th bedroom
- Freshly renovated main bathroom with free-standing bath, toilet and shower with both rain and detachable shower heads
- Ceiling fans throughout the property
- Split-system air conditioning in master bedroom, 2 secondary bedrooms, living and dining area
- Well-equipped kitchen with gas oven and 5 burner gas stove top, dishwasher, fridge space, 2 built-in wine racks, bread cabinet, soft close drawers and ample bench and storage space
- Freshly renovated laundry with ample bench space, storage cabinet and sink
- Plantation shutters in lounge room and office
- Double garage with powered roller door
- Double gated side access
- Covered outdoor entertaining area with roller shades
- Fully fenced, concrete, in-ground swimming pool with saltwater and brand new pool pump
- Large 12m x 9m 3-Bay shed (6 Car spaces / caravan / boat)
- 2,102m² of land
- Mountain views
- Approx rental return: \$950.00 p/w
- 25 mins to the stunning Sunshine Coast beaches
- 1 hour to Brisbane

With all of this in mind, there is not a single buyer who wouldn't want to inspect this home. There is a lot to offer and the home has so much love to give! Don't miss out! Call Donnie Plant on 0435 825 942 or Briony Spencer on 0435 559 313 to book an inspection today.