

7 Settlers Court, Rowville, Vic 3178



House For Sale

Wednesday, 15 May 2024

7 Settlers Court, Rowville, Vic 3178

Bedrooms: 3

Bathrooms: 2

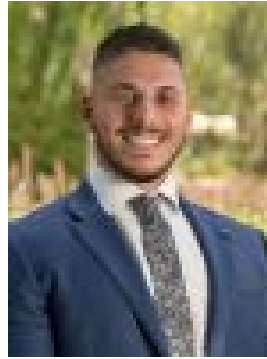
Parkings: 6

Area: 753 m2

Type: House



Syahmi Sarip
0401244372



Tim Milaki
0413336177

Auction (\$960,000 - \$1,050,000)

This stunning 3-bedroom, 2-bathroom home is situated in a quiet cul-de-sac, close to schools, shops, and amenities. Perfect for an investor, first home buyer, or downsizer to add their own personal touch. The home features a wide frontage, two-car garage, two-car carport, and space for a trailer on the far side, making storage of boats, jet skis, cars, and more a breeze. As you enter the home up three small steps and through the front door, you are greeted by a spacious open-plan family, meals, and kitchen area. To the left, an entryway leads into a spacious living and dining space, wrapping around to join the kitchen via a sliding door. The heart of the home is centrally located and has easy access to the covered deck via a sliding door off the meals area, creating a seamless transition when entertaining guests. The kitchen features white cabinetry, complementing the benchtops and flooring perfectly. A gas cooktop is located on the back wall with ample bench space surrounding it to cook up a storm. Under the window, a dual sink and dishwasher complete the cleaning zone, and on the opposite wall, an electric oven and fridge space are located along with a spacious pantry. Down the hallway, three bedrooms are located. Two are serviced by the main bathroom and separate WC, each containing a built-in robe. The third is a master bedroom complete with a walk-in robe and sizeable ensuite. Outside, a low-maintenance garden awaits your personal touch. A water tank and storage shed are also located here. Features: • 3 Bedrooms • 2 Bathrooms • Two car garage and two car carport • Open plan kitchen meals and family • Large Living and Dining • Laundry • Separate WC • Covered decking • Water tank • Storage shed • LED Downlights • Ceiling fans • Wood floors • Blinds throughout • Freshly Painted • Carpet • Skylight in meals • Gas cooktop and electric oven • Dishwasher • Ducted heating • Evaporation cooling Location: Situated in a quiet cul-de-sac, this property provides a peaceful living environment while being just moments away from essential amenities. Rowville Lakes Shopping Centre, Stud Park Shopping Centre, and the Wellington Village Shopping Centre are all within close proximity, catering to your shopping and dining needs. The area is well-served by parks and recreational facilities, including the picturesque Tirhatuan Wetlands and the extensive trails of Churchill National Park, ideal for outdoor enthusiasts. Families will appreciate the excellent selection of nearby schools, such as Rowville Primary School and Rowville Secondary College. With easy access to major roads and public transport options, commuting to Melbourne's CBD and surrounding suburbs is convenient and straightforward. On Site Auction Saturday 8th of June at 10:30am