

7 Topiary Street, Truganina, Vic 3029



Sold House

Tuesday, 9 January 2024

7 Topiary Street, Truganina, Vic 3029

Bedrooms: 4

Bathrooms: 2

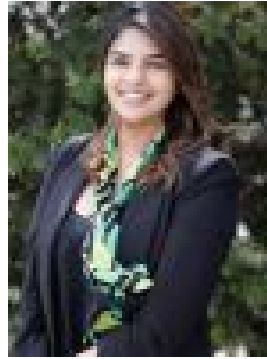
Parkings: 2

Area: 315 m2

Type: House



Mukesh Kumar
0387441370



Amy Nair
0499101111

\$645,000

Reliance Real Estate proudly present this low-maintenance lifestyle of unrivaled luxury, style and sophistication with this spacious 4 bedroom, 2 bathroom, double car garage, family home showcasing a seamless combination of light-filled with free-flowing living spaces. Prominently positioned in the heart of the Gateway Estate, build by Sheridan homes. Be in close proximity to everything, from restaurants and supermarkets to daycares primary schools and Minutes away from Tarneit train station, Williams landing Train station, Wyndham village shopping center, Westbourne Grammar Private school, Al-Taqwa Islamic school, Truganina east P9 school and Doherty's Creek P-9 (900m WALKING DISTANCE). With an open plan kitchen that holds lots of storage and which flows nicely into the living area! It also offers you great natural lighting with the large windows and sliding glass door to the backyard. The bedrooms are carpeted, with the main offering you a walk-in wardrobe and ensuite bathroom, whilst the other two offer you mirrored built-in wardrobes. Key Features For This Property-# Master Bedroom with WIR's and Double Vanity# Generous sized bedrooms# LED Downlights# High Ceilings With Natural Bright Light# Dishwasher# Walking distance from Local Schools & Shops# 900mm Appliances# Stone Bench-Top With Clear Splash-back# Evaporated Cooling# Ducted Heating# Quality Fixtures & Fittings# Fully Landscaped Front & Back Call Amy On 0499 101 111 TO ORGANISE A PRIVATE INSPECTION FOR THIS PROPERTY. PLEASE CONTACT AGENTS TO ORGANISE A PRIVATE INSPECTION FOR THIS PROPERTY. Note. All stated dimensions are approximate only. Particulars given are for general information only and do not constitute any representation on the part of the vendor or agent.