

7 Totness Court, Castle Hill, NSW 2154

CENTURY 21

House For Sale

Wednesday, 12 June 2024

7 Totness Court, Castle Hill, NSW 2154

Bedrooms: 4

Bathrooms: 2

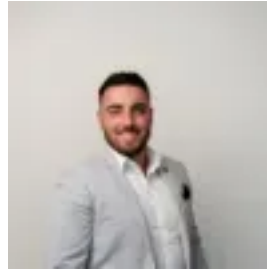
Parkings: 2

Area: 762 m2

Type: House



Karl Anthony
0296342121



Christian Fogarty
0296342121

AUCTION

This captivating 9-year-old McDonald Jones home offers a lifestyle of unparalleled comfort and contemporary elegance. Nestled on a spacious 762sqm block in a quiet residential cul-de-sac, this exceptional property boasts a sparkling inground infinity pool with a cabana, a dedicated home theatre, and a multitude of luxurious features throughout. Step inside and be greeted by a generous casual lounge room featuring a built-in buffet and study nook, perfect for relaxing or working on projects. The oversized media room offers flexible living space with sliding doors that can be closed for privacy. Adjacent to the media room, the casual living area boasts a cozy Rinnai natural gas fireplace and ample shelving, creating a warm and inviting atmosphere. The dining area seamlessly connects to the kitchen, ideal for effortless entertaining and serving. Both the casual living and dining areas are adorned with double glazed stacker doors, allowing natural light to flood the space. The heart of the home is the gourmet kitchen, a chef's dream come true. Featuring 40mm Caesarstone benchtops, top-of-the-line Smeg appliances including a 900mm oven and a 5-burner stove, an undermount double sink, soft-close cabinetry and drawers, and a breakfast bar with space for six stools, this culinary haven offers everything you need to prepare delicious meals. An oversized pantry ensures ample storage space, while a 14-bottle wine rack adds a touch of sophistication. The oversized primary master bedroom provides a luxurious retreat. Featuring a spacious walk-in robe, a modern ensuite, and private backyard access leading directly to the pool, it's the perfect place to unwind after a long day. Three additional well-sized bedrooms, all with air-conditioning, ceiling fans, and built-in robes, offer ample space for the whole family. A separate home office with an oversized built-in desk provides a dedicated workspace. Step outside onto the all natural, spotted gum decking that guides you through your own private oasis. The stunning outdoor alfresco features a custom-built kitchen with stainless steel benchtops, a bar fridge, a sink, a BBQ with a rotisserie, and ample storage. Ceiling fans, LED downlights, and a captivating view of the sparkling infinity pool create the perfect ambiance for year-round entertaining. Lush landscaping and a combination of textures like stone tiles, timber, lush foliage and natural stone create a truly inviting space. This exceptional home is equipped with the latest technology for ultimate comfort and convenience. A Daikin 8-zone digital control air conditioning system with WiFi app integration ensures year-round temperature control, while a 13KW solar system with a 10KW inverter provides energy savings. A Micron video intercom and a Bosch back-to-base alarm system provide peace of mind. Double glazed stacker doors enhance acoustic efficiency, and a ducted vacuum system makes cleaning a breeze. An oversized attic storage is also found within the property, offering multi functional storage. Key Features: *Sparkling inground infinity pool with cabana and alfresco area *Dedicated home theatre *Gourmet kitchen with top-of-the-line appliances *Ducted vacuum system and Daikin air conditioning *13KW solar system with 10KW inverter *Bosch back-to-base alarm system *Fully landscaped gardens *Embrace a life of luxury and convenience in this stunning Castle Hill property. Contact us today to arrange an inspection! Century21 The Hills District ONLINE enquiry policy -All ONLINE enquiries received from this website require BOTH a daytime phone number and email address. "All information contained herein is gathered from sources we deem to be reliable. However, we cannot guarantee its accuracy, and interested persons should rely on their own enquiries.